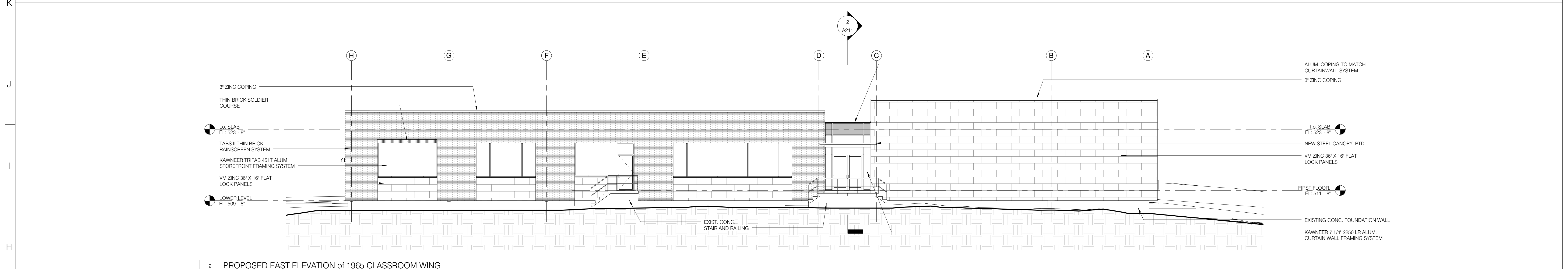
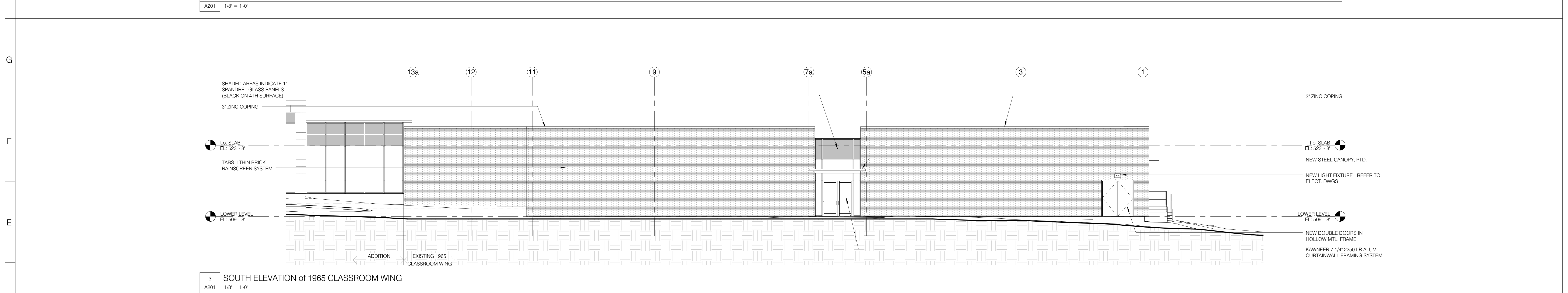


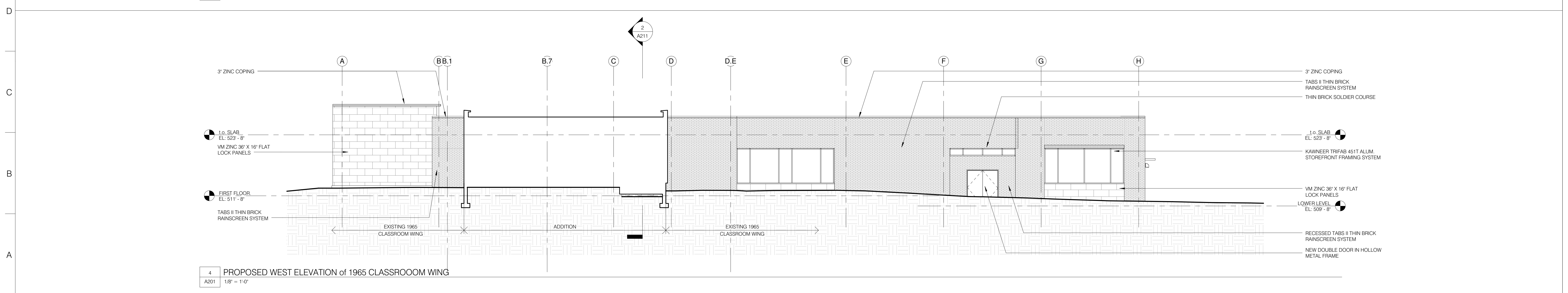
1 NORTH ELEVATION of 1965 CLASSROOM WING
A201 1/8" = 1'-0"



2 PROPOSED EAST ELEVATION of 1965 CLASSROOM WING
A201 1/8" = 1'-0"



3 SOUTH ELEVATION of 1965 CLASSROOM WING
A201 1/8" = 1'-0"



4 PROPOSED WEST ELEVATION of 1965 CLASSROOM WING
A201 1/8" = 1'-0"

USE OF ARCHITECTS DOCUMENTS:
THESE DOCUMENTS PREPARED BY THE ARCHITECT ARE INSTRUMENTS OF SERVICE FOR USE SOLELY WITH RESPECT TO THE PROJECT AND SHALL REMAIN THE PROPERTY OF THE ARCHITECT. THE ARCHITECT SHALL RETAIN ALL COMMON LAW, STATUTORY AND OTHER RESERVED RIGHTS INCLUDING THE COPYRIGHT. THE OWNER SHALL NOT REUSE OR PERMIT THE REUSE OF THESE DOCUMENTS INCLUDING ANY DESIGN & CONSTRUCTION DEVELOPMENT CHANGES OR ALTERATIONS TO THESE DOCUMENTS WITHOUT THE WRITTEN ACKNOWLEDGEMENT AND AUTHORIZATION OF THE ARCHITECT.

robert zilch architect
22 Broadacres Road
Queensbury, NY 12804
518-436-4343 office

DESIGN ARCHITECT:
BALZER + LUCK ARCHITECTURE PLLC
466 BROADWAY
SARATOGA SPRINGS, NY 12866
518.580.8818

CONSTRUCTION MANAGER:
THE CRC COMPANY
1 CIRCLE STREET
ROCHESTER, NY 14607
585.764.4847

ABATEMENT SERVICES:
AMBIENT ENVIRONMENTAL
12 COLUM AVENUE
ALBANY, NY 12208
518.482.0704

SITE/CIVIL:
H&H SITE & SPORTS DESIGN LANDSCAPE ARCHITECTURE
338 EAST STATE STREET
ITHACA, NY 14850
607.277.4080

STRUCTURAL ENGINEERING:
ZAREMBA-SOPKO ASSOCIATES
200 BROADWAY 7 SUITE 404
TROY, NY 12180
518.735.2558

M/E/P ENGINEERING:
M/E ENGINEERING
150 NORTH CHESTNUT STREET
ROCHESTER, NY 14604
585.288.6590

CONSTRUCTION ADMINISTRATION:
D.L. LOWE ARCHITECT & ASSOCIATES
44 CASTLE STREET
GENEVA, NY 14456
315.781.2835

FLOC GENEVA CAMPUS CENTER
63 PULTENEY STREET
GENEVA, NY

No.	Description	Date

Project number 1212
Drawn by SMC
Checked by BWB
Date 12.21.12
Scale 1/8" = 1'-0"

EXTERIOR ELEVATIONS of 1965 CLASSROOM WING
sheet title

A201

sheet no.
1212012-1004-08 AM