



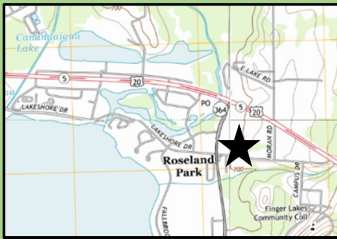
# LAKESHORE DRIVE & NY Route 364 SIDEWALK IMPROVEMENT PROJECT

PIN 4761.23

PUBLIC Information Handout

May 2020

## Project Location



## Anticipated Project Schedule

April 2020

Complete Preliminary Design



December 2020

Complete Detailed Design



April 2021

Construction Begins



November 2021

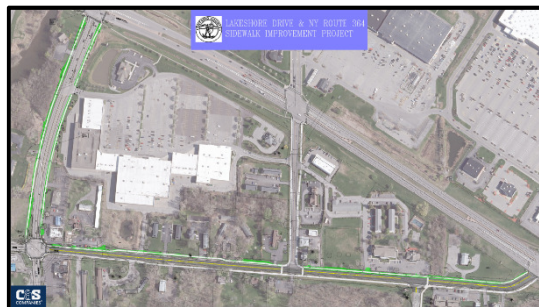
Construction Complete

## NEED FOR PEDESTRIAN SAFETY

- CMAC and FLCC have continued to grow with limited pedestrian accommodations along Lakeshore Drive and NY Route 364. Paved shoulders available for pedestrians and bicycles are narrow and deteriorating along Lakeshore Drive. Shoulders on both streets are dark and unlit.
- Some pedestrian crossings at traffic signals are still not signalized, such as those at either end of the project or the NY Route 364 entrance to Roseland Shopping Center.
- The demographic surrounding the project area show lower than average auto ownership rates, relying on alternative modes of transportation. They require access to transit stops, adjacent retail establishments and access to the FLCC campus and CMAC.
- Special events at CMAC create a combination of high vehicle traffic and a high numbers of pedestrians walking on the shoulders or in the grass.

## PROPOSED IMPROVEMENTS

- Construction of 8' wide sidewalk along the north side of Lakeshore Drive and both sides of NY Route 364.
- Pedestrian level lighting improvements throughout the corridor.
- Installation of pedestrian signals and facilities at all signalized intersections within the project limits.
- Shoulder widening and drainage improvements to Lakeshore Drive east of Moran Road



For further information, please contact:

Mr. Thomas A. Rafferty, P.E.  
Professional Engineer  
Ontario County DPW  
2692 County Road 48  
Canandaigua, NY 14424  
(585) 396-4824  
[Thomas.Rafferty@co.ontario.ny.us](mailto:Thomas.Rafferty@co.ontario.ny.us)

**Estimated Construction Cost: 1.882 M**

This project is primarily funded by the Federal Highway Administration Transportation Alternatives Program (TAP)