



LONGITUDINAL SECTION

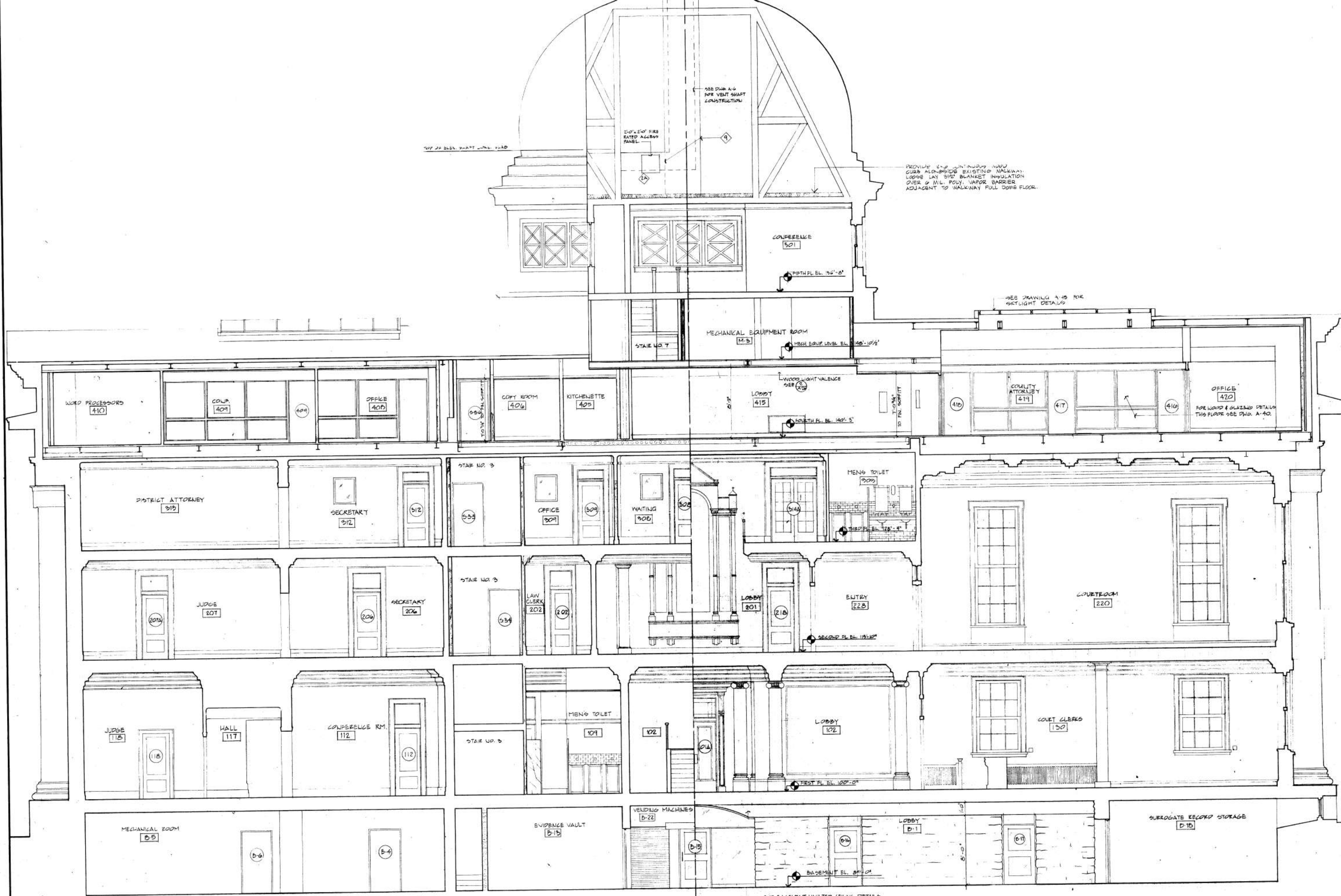
MENDEL · MESICK · COHEN · WAITE · HALL · ARCHITECTS
ALBANY, NEW YORK 12207
388 BROADWAY

RESTORATION OF
ONTARIO COUNTY COURT HOUSE
CAMMANGUA, NEW YORK

SCALE
AS NOTED
COMMISSION NO.
2408
DRAWN BY
D.J.M. L.L.L.
DATE
APRIL 1988
REVISED

DRAWING NO.

A-8



1 LONGITUDINAL SECTION
1/4" = 1'-0"

FOR BASEMENT VAULTED CEILING DETAILS
SEE DWG. A-22
FOR BASEMENT GLAZING DETAILS
SEE DWG. A-19