

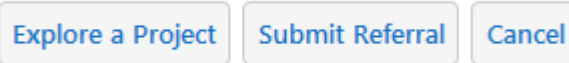


Sign In to the Application (County and Municipal Staff Only)

https://oncornng.co.ontario.ny.us/Html5Viewer/Index.html?configBase=https://oncornng.co.ontario.ny.us/Geocortex/Essentials/REST/sites/PlanningBoard/viewers/OnCOR_Light/virtualdirectory/Resources/Config/Default

1. In the top right corner next to the Search box, click the **Sign in** link.
2. Enter the user name and password when prompted and click the **Sign In** button.

Once logged in, a Welcome panel is displayed to the left of the map. Three options are provided:



- *Explore a Project* - this allows you to define a project area and see what features are within and in the vicinity that could be impacted or may limit viability of development
- *Submit Referral* - use this option to submit a formal referral to the County Planning Board (Note: this feature will be available later in 2019)
- *Cancel* – this closes the Welcome dialog

Begin Exploration

1. Choose a community from the **Municipality** dropdown menu

Municipality:

Town of Victor

2. In the **Tax Parcels in Project Area** text box, enter part or all of the Tax Map ID to include in the project – a list will appear matching what you have typed. Once you choose the correct value this is added to the list below. You can then add more parcels to this list. Note: The map will automatically zoom and center to show all the parcels in the list.

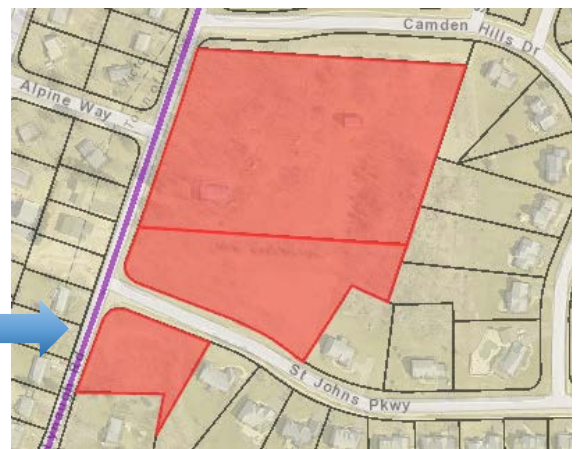
Tax Parcels in Project Area:

28.02-1-2.078

Selected Tax Parcels:



Select one or more tax parcels, then click on the "Remove" button to remove them from this list.


28.02-1-2.200
28.02-1-2.078



3. If you added a parcel erroneously to the list, simply select the item and click the **Remove** button.
4. Click the **Continue** button.
5. The last step is optional – you can launch the outside programs to evaluate whether sensitive resources existing near your project area. Text boxes are provided for you to manually type values to include in the final reports.

The **Go to CRIS Application** link will open a new browser tab for you to investigate whether archaeological features are known in the area. This Cultural Resources Information System is a program created by the New York State Historic Preservation Office (SHPO). An example of search results is shown below:

| View | Zoom | USN | Name | Status |
|---|---|--------------|---|--------|
|  |  | 06915.000015 | COBBLESTONE HOUSE AT 1095 LYNAUGH ROAD - 1095 LYNAUGH RD | Listed |

| Zoom | Number | Name | Municipality |
|---|-----------|---------------------------|--------------|
|  | 01NR01874 | Cronkite, Jeremiah, House | Victor |

The **Go to Environmental Resource Mapper** link will open a new tab to investigate whether rare plants and animals existing near your project area. Note: The last page (Page 15) of the **Full Form** will indicate if there are such features (Section E.2.p). Also note that this checks for national register and archaeological sites (Sections E.3.e., E.3.e.ii, and E.3.f.).

Planning Board Exploration ×

If you would like to include information about archaeological impacts or rare plants and animals for the project area, please use the options below.

NOTE: These will launch a new website to obtain the details.

Archaeological Sensitivity:

[Go to CRIS Application](#)

COBBLESTONE HOUSE AT 1095 LYNAUGH ROAD - 1095 LYNAUGH RD; Cronkite, Jeremiah, House

Rare Plants and Animals:

[Go to Environmental Resource Mapper](#)

None (verified in Full Form 12/01/2018). |

When you have entered information (if desired), click the **Finish Analysis and Summary Reports** link. It may take 10-15 seconds to create the new Exploratory Area boundary and respective 500' buffer zone. Two report links will be displayed for the area report and buffer zone report. Note that each can take *several minutes to run* due to the complexity of analysis! Click on a link to run the report (this opens a new browser tab).

Planning Board Exploration ×

Listed below are links to create detailed summary reports for the Exploratory Area and a 500' buffer zone around this area. **Special Note:** Each report can take several minutes to run due to the extensive information and different maps included. Recommend grabbing a cup of coffee while you wait... :)

Note: The links below will direct you to a new report generation status web page where the report may still be generating. Once the report is generated, it will be available on that page.

[Explore Area Summary](#)
[Explore Area Buffer Summary](#)

When done, you will see a **Download** link to view the PDF report.

The print job is finished.

[Download](#)