

## CHAPTER 3: EXISTING PROGRAM DESCRIPTION

---

### **CURRENT SOLID WASTE MANAGEMENT PRACTICES**

Solid waste management in Ontario County is a relatively de-centralized operation, with municipalities at the town and village level making solid waste related decisions. This has resulted in a wide variety of management practices through the County. Detailed information about waste disposal, by municipality, can be found in Appendix \_\_\_, but a summary of activities by waste type follows.

### **COLLECTION AND DISPOSAL OF NON-RECYCLABLES**

Curbside collection of non-recyclable municipal solid waste is available; however, the extent is unknown. Only the City of Canandaigua and the Village of Victor have municipal collection systems paid for through tax levy. Curbside service in other areas, if available, is provided by private haulers, who are hired individually by residents or neighborhood associations. Haulers' service boundaries overlap and change frequently. The pricing rates for private collection of non-recyclables varies from one municipality to another and from hauler to hauler. Like rates, pricing mechanisms vary and include per bag charges, annual household fees, and monthly charges.

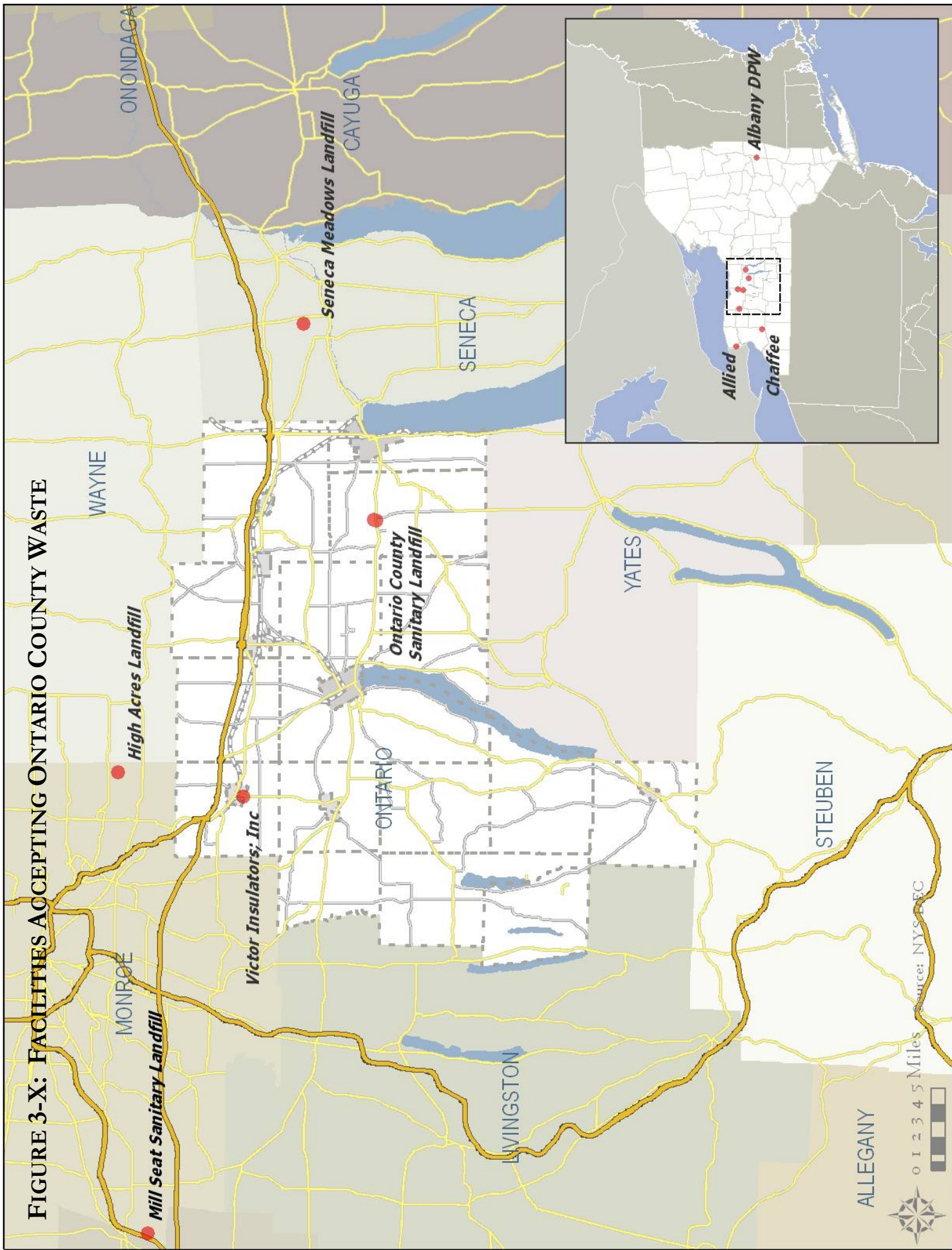
Presumably due to the competitive nature of the business, haulers are reluctant to share detailed information about rates, customers, or service areas. A partial list of serving Ontario County includes Appleton Disposal; Casella; Finger Lakes Refuse Disposal; K& D Disposal; Lyons Road; Palmer Pratt Disposal; San Pietro; Superior; and Waste Management.

Most MSW is taken directly to the Ontario County Landfill near Flint, New York. Its operations are described in further detail in the Facilities Inventory portion of this chapter. Additionally MSW is transported to various out-of-County landfills, including:

- High Acres Landfill
- Seneca Meadows Landfill
- Albany Rapp Road Landfill \*
- Allied Waste Niagara Falls Landfill\*
- Waste Management Chaffee Landfill CID\*
- Mill Seat Sanitary Landfill\*

\* minimal amount

**FIGURE 3-X: FACILITIES ACCEPTING ONTARIO COUNTY WASTE**



Those residents in rural areas not served by a curbside collection system and other residents who may not desire to utilize the curbside system may take their own solid waste to the respective transfer station servicing their municipality.

**TABLE 3-X: REGISTERED TRANSFER STATIONS IN ONTARIO COUNTY**

TRANSFER STATION NAME	FACILITY ADDRESS	PERMITTED USERS (RESIDENTS OF...)
Bristol Rural Transfer Station	3901 County Road 2	Towns of Bristol, East Bloomfield
Canandaigua Transfer Station #1	5440 State Route 5 & 20	Town of Canandaigua
Canandaigua Transfer	4620 County Road 46	Unrestricted
Geneva Rural Transfer		Town of Geneva
Town of Gorham	3478 Lake to Lake Road	Town of Gorham, Village of Rushville
Hopewell Rural Transfer	2716 County Rd 47	Town of Hopewell
Manchester Transfer	1272 County Road 7	Town of Manchester, V. of Shortsville
Naples Rural Transfer	6614 Co. Road 21	Unrestricted
Phelps Transfer	1342 State Route 96	Town, Village Phelps
Richmond Transfer Station	8690 Main Street, Honeoye	unrestricted
Seneca Transfer Station	3671 County Road 5	Town of Seneca
S. Bristol Rural Transfer Station	Middlebrook Road	Town of South Bristol
Victor Transfer Station	60 Rawson Road	Town, Village Victor

The pricing mechanisms used by transfer stations vary widely from charging by weight, by volume, by item type, and by annual pass.

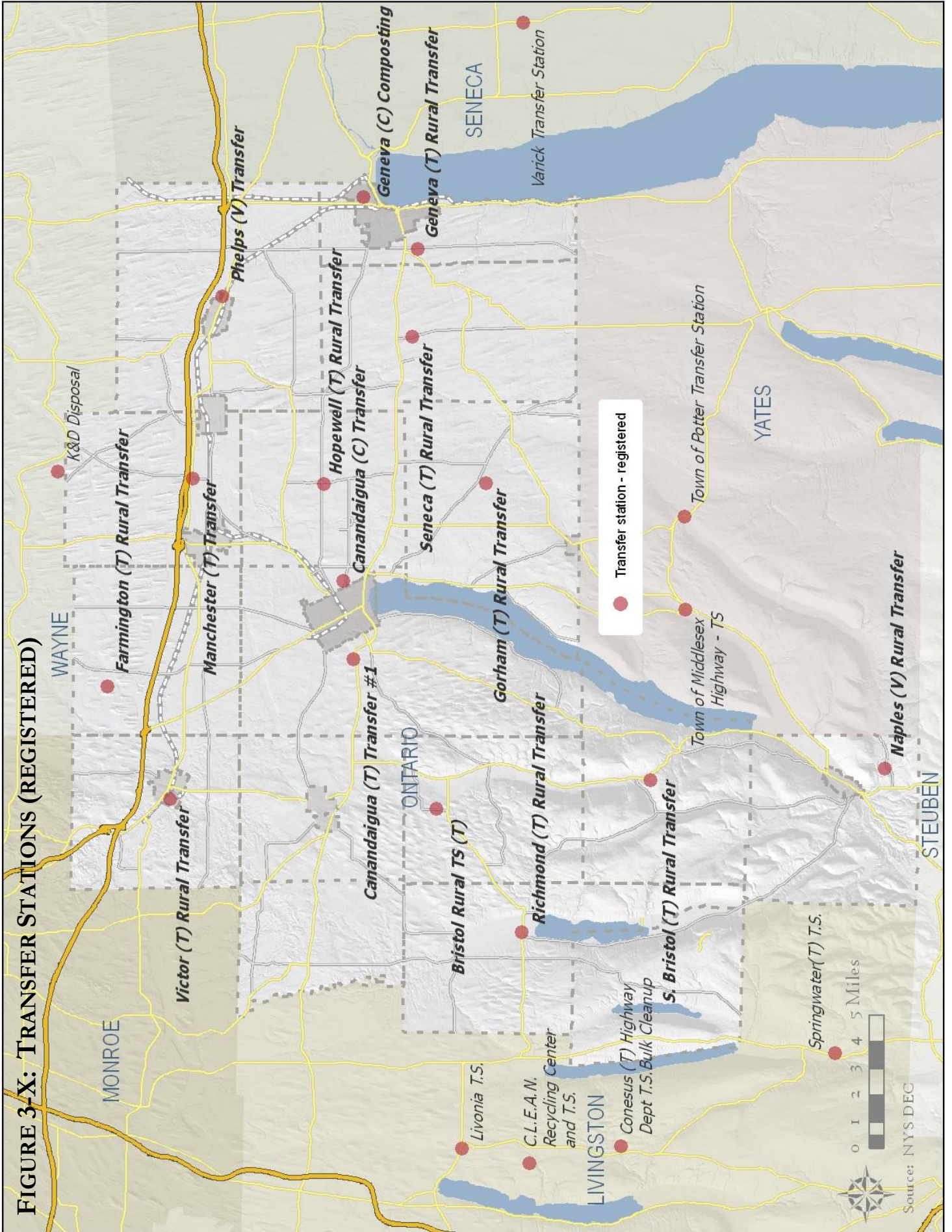
**TABLE 3-X: TRANSFER STATION BY TYPES OF WASTE ACCEPTED & PRICING**

NAME	MATERIALS ACCEPTED *								OPERATOR
	MSW	Recyclables	Yard Waste	Bulk Items	Scrap Metal	C & D	Tires	Sludge	
Bristol Rural Transfer Station	V	F			F				Pratt Disposal
Canandaigua Transfer Station #1	F,C	F	F	C	F				T. Canandaigua
Canandaigua Transfer	W	F		W					Comm. Waste Services
Farmington Rural Transfer			F	C			C		T. Farmington
Geneva Composting			F	F				V	C. Geneva
Geneva Rural Transfer	C	F	F						T. Geneva
Town of Gorham	U	F		F	F	V			T. Gorham
Hopewell Rural Transfer	C	F	F	C,F			C		T. Hopewell
Manchester Transfer	C	F	C		F		C		T. Manchester
Naples Rural Transfer		F		C					Private operator
Phelps Transfer	W	F	F	F					T./V. Phelps
Richmond Transfer Station		F		W	F				K&D Disposal
Seneca Transfer Station	F	F	F	F	F				Casella
S. Bristol Rural Transfer Station	C	F							T. South Bristol
Victor Transfer Station									T. Victor

**\* Charge Structure**

- C Coupon System or Priced by Item Type
- V By volume (e.g. per bag, regardless of weight)
- U Unlimited with annual permit
- W By weight (i.e. price per pound)
- F Free

**FIGURE 3-X: TRANSFER STATIONS (REGISTERED)**



### **COLLECTION AND DISPOSAL OF RECYCLABLES**

Two basic systems currently existing in Ontario County for the collection of recyclables: curbside collection and residential drop off sites (i.e. transfer stations). As with non-recyclable materials, the City of Canandaigua and the Village of Victor offer the only municipally-operated curbside pick up in the County; elsewhere, it is available only through private haulers. Residents who elect not to hire a private hauler typically dispose of recyclables at their local transfer station. Transfer stations publicly owned and operated tend to be restricted to residents of the municipality in which the facility is located, unless there is a formal intermunicipal agreement. Privately operated transfer stations, such as the ones in the City of Canandaigua, Richmond, Seneca, and Bristol, tend not to restrict who may use the facility. No transfer station charges for the disposal of recyclables.

Because most transfer stations in Ontario County dispose of their recyclables at FCR Recycling, which has sophisticated material sorting technology, they do not require source separation. The last exception to this was the Canandaigua Transfer Station #1, but in January 2010 it converted to single stream recycling as well.

### **COLLECTION AND DISPOSAL OF YARD WASTES**

Yard wastes, which are prohibited in the Ontario County Landfill, are managed separately by each municipality within Ontario County. Some towns provide for seasonal leaf and tree limb pick-up, while others allow their separate disposal at the local transfer station.

- 6 municipalities offer curbside pick-up. Most programs are seasonal with a limited number of dates in the fall and spring.
- 9 municipalities convert debris collected into mulch, woodchips, or compost available at no cost to residents
- Residents of 17 municipalities are able to drop off yard waste at their respective transfer station at no charge.
- 2 municipalities burn or bury yard waste collected.
- 4 municipalities have no yard waste programs.
- 1 municipality's yard waste is used as cover at the Ontario County Landfill.

### **COLLECTION OF BULK ITEMS AND SCRAP METAL**

Bulk Items, which includes larger items such as appliances and televisions, are handled at the Town and Village level.

- 4 municipalities have designated curbside collection days, in most cases less than five times per year
- 13 municipalities have access to a transfer station that accepts yard waste. Seven allow free drop off; 6 have variable rate pricing based on item type or weight
- 4 municipalities have no program and 1 municipality plans to begin bulk item collection at its transfer station in Summer 2010

In most cases, scrap metal collection is free and collected in a separate container from other bulk items. Metal is one of the more highly valued recyclable materials. In Ontario County, Union Processing provides the metal bin and empties it at no cost at most the transfer stations. Items are also brought to the Ontario County Landfill and Alco.

DRAFT

## SOLID WASTE MANAGEMENT AND RECYCLING FACILITIES INVENTORY

### FACILITIES LOCATED IN ONTARIO COUNTY KNOWN TO ACCEPT WASTE GENERATED IN ONTARIO COUNTY

**NAME:** Ontario County Landfill

**LOCATION:** 1879 Routes 5 & 20, Stanley, New York, 14561

#### **MATERIALS GUIDELINES:**

**Materials Permitted:** All waste streams permitted at Ontario County Landfill are done in accordance with NYSDEC Part 360 regulations and any special conditions set forth in the Operating permitted issued by the NYS Department of Environmental Conservation. Municipal Solid Waste, special waste, and commercial/industrial waste are accepted. Beneficial Use Determination (BUD) material such as ash, soil, sludge, and processed construction and development debris, can be accepted and used as alternate daily cover or road base.

- General household or landscape waste
- Uncontaminated non-friable asbestos
- Uncontaminated construction and demolition debris
- Uncontaminated packaging material (i.e. not previously in direct contact with projects, raw materials, or waste)
- Non Hazardous Industrial Waste\*
- Sewage Treatment Plant Sludge\*

\* requires special approval

The following “Special Wastes” may be approved for disposal at the Ontario County landfill after the submittal of an application with sufficient supporting documentation:

- |   |  |
|---|--|
| - Friable asbestos  | - Fine powders or dust waste from manufacturing facilities |
| - Ash   | - Glass and plastic industry wastes                        |
| - Iron and steel manufacturing wastes   | - Fertilizer or agricultural chemicals                     |
| - Petroleum wastes  | - Metallic sweepings                                       |
| - Textile manufacturing wastes  | - Treatment facility sludge                                |
| - Contaminated soils including soils from remediation or removal of storage tanks | - Off-specification or outdated products                   |
| - Debris generated by environmental site remediation                              | - Pharmaceutical wastes                                    |
| - Demolition debris from industrial facilities                                    | - Mining and production wastes                             |
|   | - Sandblast grit.  |

Special waste approvals are assigned by approval number and are generally valid for a maximum two year period. All haulers must have a valid Part 364 Waste Transporter Permit. For most Special Wastes, unless the generator can justify otherwise, sample of the material must be obtained and analyzed for volatiles, semi-volatiles, metals, pesticides (if warranted), PCBs, flashpoint, reactivity, pH, percent solids and free liquids according to the Total Leaching Laboratory Protocol (TCLP).

**Materials Not Permitted:** NYSDEC Part 360 specifically prohibits the following waste streams from disposal in a sanitary landfill.

- Bulk liquids (liquid containers from a household of 5 gallons or less in size are not considered bulk liquids).
- Industrial/Commercial waste not approved by the NYSDEC for disposal at a Sanitary Landfill
- Any sludge with less than 20% solids
- Whole waste tires
- Lead acid batteries.
- Hazardous waste and low-level radioactive waste

**Hazardous Waste:** Disposal of Household Hazardous Waste on-site is not permitted, but, as part of its OML, Casella, once per year, sponsors a collection event at the Ontario County Landfill. A third party, such as APT Environmental Inc., is contracted to collect, manage, transport, and dispose of the waste. Ontario County and NEWSNY accept responsibility for the management of the event, but the third party assumes “generator status.” The Event is open to residents of Ontario County only, and is not open to businesses. Preregistration is required for the event; verification that the resident lives in Ontario County is completed during the sign-in period.

The procedure during the collection event is as follows:

Waste Determination Plan: Once waste has been removed from the participant’s vehicle by an APT Environmental Inc. employee it shall be handed over to an APT Environmental chemist, who will decide if the waste is acceptable with the use of a Waste ID kit and reference books. If the waste is acceptable APT Environmental Inc. then takes custody of the waste.

Segregation Plan: APT Environmental Inc. personnel segregates all known wastes and repackages the waste as necessary, records information about the waste for manifest purposes and containerizes the wastes in the appropriate shipping drums.

Packaging Plan: Once a drum is filled with waste, it is closed and transferred to a staging area until the end of the collection, at which point it is transferred to a vehicle for transportation.

Spill Prevention and Control Plan: All waste receiving and processing areas are covered with polyethylene sheeting to protect the surface of the collection site and facilitate clean-up of any spilled materials.

Public notification for the event includes advertising in newspaper publications one month prior to the schedule date. Posters advertising the even are also posted at Transfer Stations.

Materials accepted at the event include:

- Acids
- Adhesives
- Aerosols

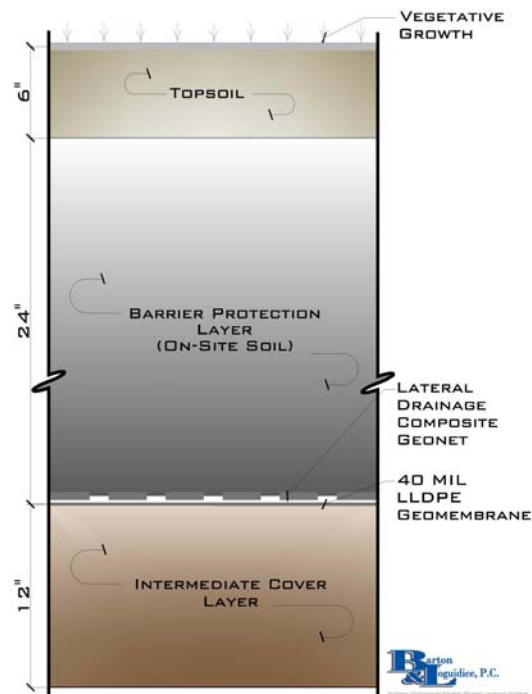
- Antifreeze
- Automotive/Marine Batteries
- Boric Acid
- Brake Fluid
- Cements
- Charcoal Lighters
- Chlorine
- Cleaning Fluid
- Computers
- Degreasers
- Disinfectants
- Drain Cleaners
- Dry Gas
- Dyes
- Epoxies
- Fiberglass Resins
- Flea Powders
- Furniture Strippers
- Hair Removers
- Herbicides
- Insect Repellents
- Mothballs or Flakes
- Nail Polish Removers
- Oven Cleaners
- Oil Based Paints
- Pain Removers
- Paint Thinners
- Permanent Solutions
- Pesticides
- Photo Chemicals
- Rat Poisons
- Rug & Upholstery Cleaners
- Rust Solvents
- Wood Preservatives
- Spot Removers
- Toilet Bowl Cleaners
- Turpentine
- Varnish
- Weed Killers
- Wood Polishes
- Wood Stains
- Fluorescent Light Tubes
- Non-PCB Containing Light Ballasts
- Fire Extinguishers

**LANDFILL HISTORY:**

**Phases I – III2B:** The Landfill was started in 1974 in the Town of Seneca on a farm that the County acquired through back taxes. The first Phase of the landfill waste started in 1974 and closed in 1979. Phase I is 17 acres in composition and is estimated to be 10 feet deep. The County employed a trench method for land filling in this area. Essentially, finger trenches were dug out in the side of the hill, gravel placed in the bottom of the cut, and waste filled in on top. The original cap on Phase I was redesigned in 1986 due to numerous leachate breakouts. Additionally waste was added and a clay and soil cap was placed on the landfill and seed. See Figure 3-\_\_\_. At this time the County also added a perimeter leachate collection system with a single manhole. Today, Casella treats this leachate along with the rest of the leachate collected from other parts of the landfill.

Phase II was started in 1979 and closed in 1981. The Phase II landfill was constructed before strict guidelines on landfill construction were drafted and is an unlined landfill. The landfill method was similar to the Phase I area and consisted of a series of trenches which were backfilled with garbage. No baseliner or leachate collection system was included in the design of this area. Phase IIA was started in 1981 and was built contiguous to the old Phase II landfill. Phase IIA was built on a five-foot thick natural soil layer and employs a

**FIGURE 3-\_\_:** TYPICAL FINAL COVER SYSTEM



Source: Barton & Loguidice, P.C.

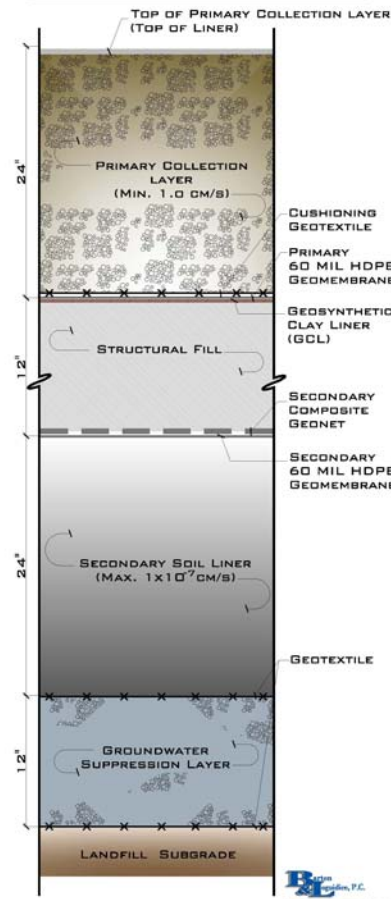
leachate collection system that consists of a series of laterals that drain to a header line and into a leachate holding pond. It lasted until 1991 with height increases and modifications to its permit, and was closed in 1992 employing a geosynthetic liner. Phase II/IIA is 26 acres.

**Phase III:** Phase III of the landfill was constructed in 1991 as a single composite liner. It has a clay liner, leachate collection system, and a single geosynthetic liner. This area of the landfill was approved for construction in 1990 and the construction permit covers an area of 55 acres. In 1991, 13 acres of this area was built. It was Stage I of Phase III. Stage II of Phase III was built in two sections. Stage IIA, Phase III consisting of 7.7 areas was built in 1995 and Stage IIB consisting of 8.7 acres was built in 1997. Stage III consisting of 9.7 acres was also built in two sections, but at the same time in 1999-2000. See Figure 3-\_\_.

Casella constructed Phase III, Stages 4 through 6, with the last Stage completed in Summer 2009. Stage 7 is permitted; construction is scheduled to begin in Summer 2010. The final stages, the “Wrap-Around” and “Eastern Expansion” still need to go through the State Environmental Quality Review (SEQR) process.

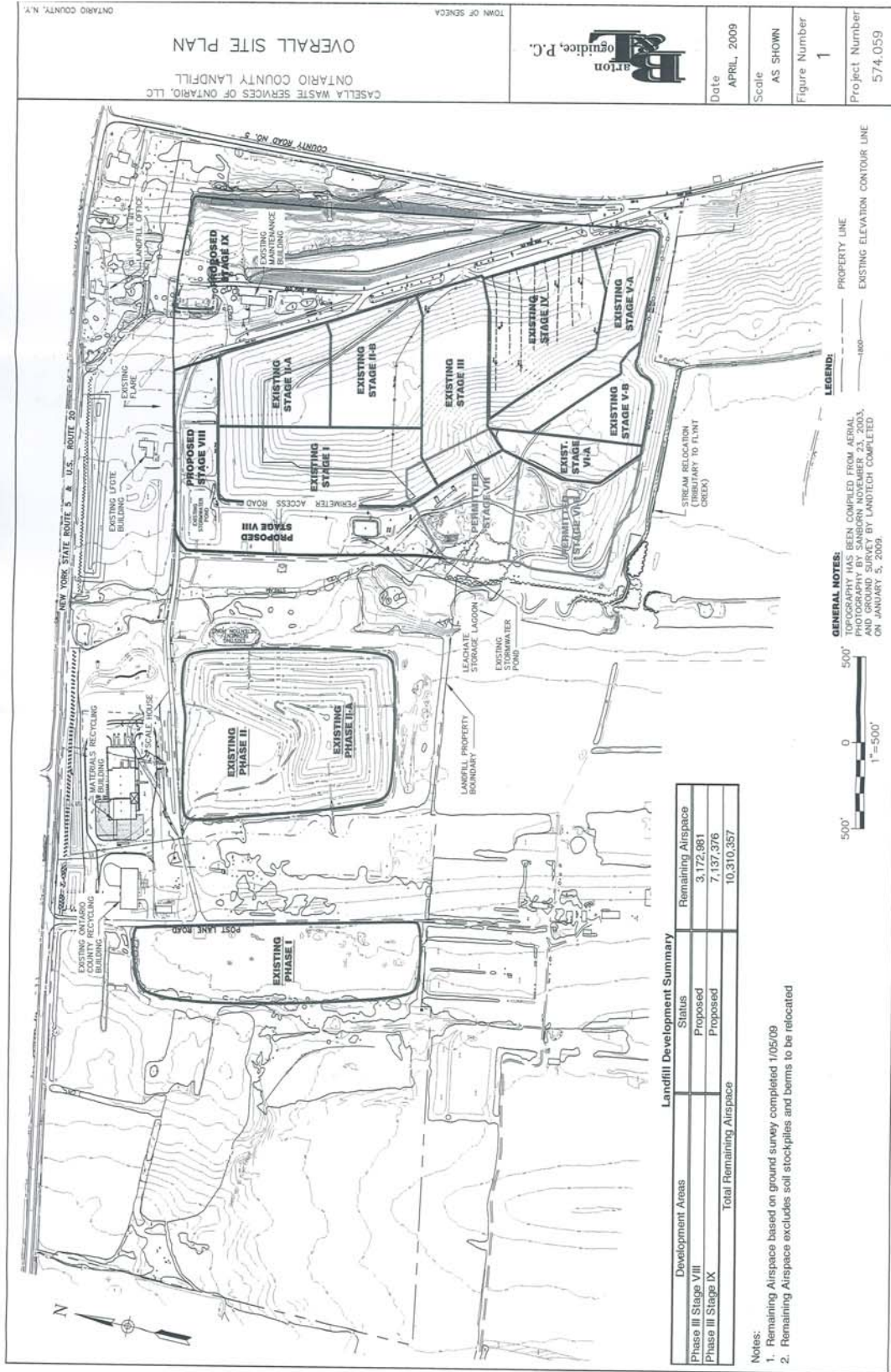
The total constructed area to date is 39.1 acres of the originally permitted 56-acre footprint. An expansion permit that adds 24.49 acres to the footprint of the Phase III landfill is currently pending.

**FIGURE 3-\_\_ : TYPICAL DOUBLE COMPOSITE LINER SECTION**



Source: Barton & Loguidice, P.C.

**FIGURE 3-\_\_ : ONTARIO COUNTY LANDFILL OVERALL SITE PLAN**



**OPERATIONAL RELATIONSHIP WITH ONTARIO COUNTY:** The Landfill is operated by New England Waste Services of N.Y., Inc. (NEWSNY) under a 25 year operation and management lease agreement (OML) with Ontario County that was initiated in 2003. NEWSNY also has a host agreement with the Town of Seneca. The agreement outlined in Table 3-\_\_.

**TABLE 3-\_\_: SUMMARY OF NEWSNY AGREEMENT WITH ONTARIO COUNTY AND TOWN OF SENECA**

<b>TOWN OF SENECA</b>	
Host Fees Before Expansion Permit	7.1% of Quarterly Average Rate per Ton (or \$1.85 per ton, whichever is higher)
Host Fees After Expansion Permit	7.5% of Quarterly Average Rate per Ton (or \$2.10 per ton, whichever is higher)
Water/Sewer Bond Payments	\$60,000/year
Town of Seneca Waste Disposal at Landfill	Free
Recreation Area	\$100,000 Construction; \$10,000/year operation
Fire Protection Payments	\$15,000/year
Property Protection Plan	Compensates homeowners for property value losses
New Sewer Line	Connects Village of Flint and BOCES
One Time Legal Fees Payment	\$35,000
Costs of Town Oversight of Landfill	\$2,000
<b>ONTARIO COUNTY</b>	
Lump Sum Payment	\$15,000,000
Lease Payments	\$2,000,000/year
Revenue Sharing	25% of Gross Revenue in excess of \$34.00/Ton
Household Hazardous Waste Disposal	Free (one collection day per year)
Reserved capacity for In-County Waste	100,000 tons/year
Ontario County Waste Disposal at Landfill	\$29/ton excluding Town of Seneca (see above)
Planned Business Development District	\$3,800,000

**SIZE, CAPACITY, & LIFE EXPECTANCY:** The expected life of the landfill is through the fulfillment of the OML or 2027. The total property of the landfill is 387.14 acres. The landfill footprint for disposal is 123.49 acres including future development anticipated in the OML. The daily acceptance rate (design capacity) of waste for disposal is 2,999 tons per day.

As part of the OML agreement, NEWSNY is to pursue additional capacity for the landfill. The expansions outlined are the Wrap Around and Eastern Expansions. As of June 2009, the Ontario County Landfill has approximately 7,989,425 cubic yards of existing permitted capacity. The

proposed development wrap around and western expansion will add an additional 3,172,981 cubic yards and 7,137,376 cubic yards, respectfully.

The following municipalities in Ontario County bring waste directly to the facility:

- City of Canandaigua
- Town of Canandaigua
- Town of Geneva
- Town of Gorham
- Town of Hopewell
- Town of Manchester
- Town of Seneca
- Town of South Bristol
- Town of Victor
- Town of West Bloomfield
- Village of Victor
- Village of Phelps

The following municipalities have transfer stations operated by private companies that dispose of waste at the Ontario County Landfill:

- Town of Bristol- Pratt Disposal
- Town of Canadice—K&D Disposal (via Town of Richmond Transfer Station)
- Town of East Bloomfield – Pratt Disposal
- Town of Richmond—K&D Disposal
- Town of Naples

**PERMIT AND COMPLIANCE SUMMARY:** The Ontario County Landfill is subject to the regulatory requirements in Table 3-\_\_: Ontario County Landfill Regulatory Requirements to ensure environmental protection.

**TABLE 3-\_\_: ONTARIO COUNTY LANDFILL PERMITS AND COMPLIANCE SUMMARY**

TYPE OF PERMIT	ISSUER	PERMIT NUMBER
Article 27, Title 7; 6 NYCRR 360: Solid Waste Management	NYSDEC	
Article 19: Air Pollution Control Title V Permit	NYSDEC	
Part 364 Waste Transporter Permit	NYSDEC	
Divisible Load Weight Permit	NYS Dept of Transportation	
Host Community Agreement	Town of Seneca, Ontario County	
Notice of Intent for Stormwater Discharges Under SPDES General Permit	NYSDEC	
Weight Scales Calibration	Ontario County Dept Weights and Measures	
Weighmaster Licenses	NYS Dept of Ag & Markets	

**NAME:** FCR Recycling Inc.

**LOCATION:** 1879 Routes 5 & 20, Stanley, New York, 14561

**MATERIALS GUIDELINES:** See Table 3-X

**TABLE 3-X: RECYCLING GUIDELINES AT FCR RECYCLING**

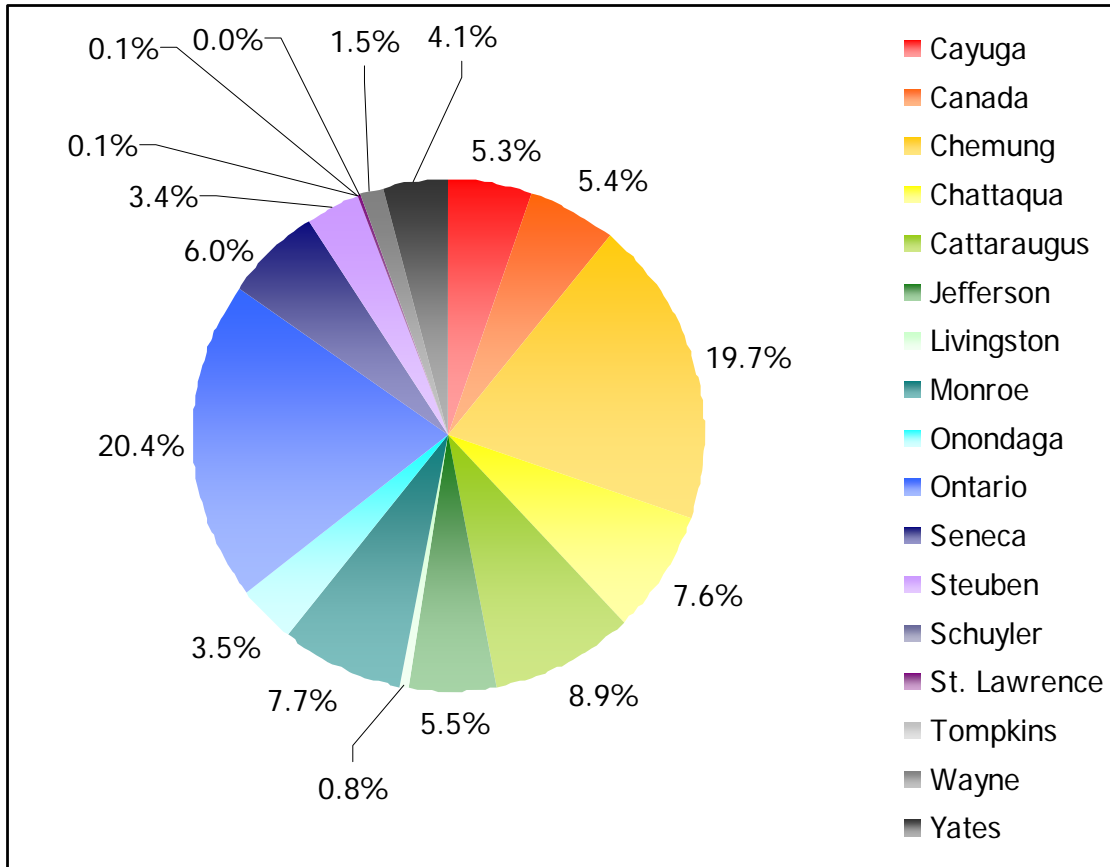
<b>ACCEPTABLE ITEMS</b>	<b>UNACCEPTABLE ITEMS</b>
Cardboard	Food Waste
Clean Boxboard (e.g. shoe boxes, cereal boxes)	Styrofoam
Office Paper (white and colored)	Plastic Bags
Magazines, newspapers, Glossy Inserts	Print Cartridges (toner or inkjet)
Aluminum Cans	Cell Phones
Tin Cans	Batteries
Glass Bottles and Jars	Computer or other Electronics
Plastic Bottles (#1-#7)	Glassware (pyrex, light bulbs, window glass)
	Ceramics

**OPERATIONAL RELATIONSHIP WITH ONTARIO COUNTY:** Like the Ontario County Landfill, FCR is operated by New England Waste Services of NY, Inc. under a 25 year operation and management lease agreement that was initiated with the County in 2003.

**SIZE, CAPACITY, & LIFE EXPECTANCY:** FCR was built in 2007. It is a fully enclosed steel frame structure with a life expectancy in excess of 25 years. The facility is permitted to process up to 80,000 tons per year of recyclables, through a single stream zero sort process. Upon processing the materials, FCR distributes the product, by type, to a variety of facilities throughout the United States and Canada.

FCR accepts materials from throughout New York including Cayuga, Chemung, Chattaqua, Cattaraugus, Jefferson, Livingston, Monroe, Ononondaga, Ontario, Seneca, Steuben, Schuyler, St. Lawrence, Tompkins, Wayne, and Yates Counties and from Canada. Figure 3-X illustrates that Ontario County is the biggest contributor of materials, followed by Chemung, Cattaraugus, and Chattaqua County, respectively.

**FIGURE 3-X: ORIGIN OF RECYCLABLES DEPOSITED AT FCR, BY % OF TOTAL STREAM**



**NAME:** TOMRA Recycling, LLC

**LOCATION:** 5923 Loomis Road, Farmington, NY, 14424

**MATERIALS ACCEPTED:** Glass, Aluminum, Cardboard, and Plastic.

**OPERATIONAL RELATIONSHIP WITH ONTARIO COUNTY:** None. Private business (Sales and service of Reverse Vending Machines (RVMs). Recycling of beverage containers.) TOMRA’s material handling activities in North America include:

- Pick-up of beverage containers collected through RVMs and certain manual systems, and the transportation of these containers to material processing facilities.
- Operation of material processing facilities in order to sort, clean and compact the different materials into clean fractions for optimal recycling.
- Sale of the processed materials to recyclers on behalf of the beverage industry.

**FACILITIES OUTSIDE ONTARIO COUNTY KNOWN TO ACCEPT WASTE GENERATED IN ONTARIO COUNTY**

**NAME:** High Acres Landfill & Recycling Center

**LOCATION:** 425 Perinton Parkway, Fairport, New York, 14450

**MATERIALS ACCEPTED:** Municipal solid waste, construction & demolition material, wood waste, contaminated soils & certain special waste, Sludge, Asbestos & special waste trench loads.

**FACILITY HISTORY:** The High Acres Landfill opened in 1971 and was acquired by Waste Management in 1972. The facility, which accepts solid waste from throughout the region, is located on the eastern edge of Monroe County in the town of Perinton and crosses over the western border of Wayne County in the town of Macedon.

**OPERATIONAL RELATIONSHIP WITH ONTARIO COUNTY:** High Acres Landfill & Recycling Center is a division of Waste Management of New York, LLC. The landfill does not have a direct relationship with Ontario County, but does accept waste produced in Ontario County.

**SIZE, CAPACITY, & LIFE EXPECTANCY:** The facility is located on approximately 1,000 acres. The permitted landfill consists of around 450 acres and is forecasted to be active through 2050. The landfill permit for the High Acres Western Expansion Landfill was issued on July 8, 2003. The expiration date of the permit is July 9, 2013.

---

**NAME:** Seneca Meadows

**LOCATION:** 1786 Salcman Road, Waterloo, NY 13165 in Seneca County

**MATERIALS GUIDELINES:**

**Materials Accepted:** Municipal Solid Waste, Tires, Some commercial and industrial non-hazardous solid waste.

Seneca Meadows' Tire Recycling Facility was designed, permitted and constructed to recycle passenger car, light truck and large truck (1100 - 22,5R) waste tires. Since operation began in late 1997, 1,500,000 tires per year have been processed and chipped. Tire chips are a recognized product with multiple beneficial civil engineering applications. SMI has successfully been utilizing tire chips as a replacement for natural aggregate since 1999 during the construction of landfill systems. These systems include landfill gas collection, leachate collection and road construction. Seneca Meadow's Tire Recycling Facility processes up to 12,000 tires a day. The 3 inch tire chip product is primarily employed as a drainage material for leachate in the landfill liner system.

**Materials Prohibited:**

- |                         |                           |                      |
|-------------------------|---------------------------|----------------------|
| - Hazardous Waste       | - Free Liquids            | - than 5 gallon size |
| - Radioactive Waste     | - Waste Material with     | (drums must be empty |
| - Unapproved Industrial | less than 20% solids      | and                  |
| or Special Waste (i.e.  | - Intact Steel or Plastic | - crushed)           |
| - asbestos, medical     | Drums or Liners           | - Compressed Gas     |
| waste)                  | greater                   | Cylinders            |

- Whole Tires (must be recycled at our Tire Recycling Facility)
- White Goods (i.e. refrigeration units, air conditioning units)
- Quantities of Batteries, Thermostats, Florescent Bulbs, Ballasts, Computer & Electrical Components
- Bulk Yard Waste
- Any Suspicious or Unrecognizable Materials

**SIZE, CAPACITY, & LIFE EXPECTANCY:** Seneca Meadows is approximately 2600 acres, 400 of which is dedicated landfill. In 2005, it accepted over 6,000 tons of garbage a day from multiple states, including New York, Massachusetts, Connecticut, New Jersey, and Pennsylvania. The facility is limited to a height of 280 feet. In 2007, a 181 acre expansion was added; it is estimated to provide 14 years of landfilling.

**GAS PRODUCTION:** Seneca Meadows has been producing electricity from landfill gas since 1995, collecting methane gas from a series of wells drilled into the capped landfill and sending that gas to an engine that generates electric power. When the plant first opened, it produced 2.4 megawatts of power per hour. Today, it produces 18 MW, enough to continuously power 15,000 to 18,000 homes. Plans call for the plant to be expanded again in 2009 to generate 24 megawatts of power. Seneca Meadows parent company, IESI Corporation, estimates the revenue of the landfill to be around \$48 million.

**FACILITY HISTORY:** The site was first created in 1953 and owned by the Tantello Corporation. The landfill was closed in the mid-1980s after groundwater was found to be contaminated. Following a \$22 million dollar clean-up, a site in the middle of the facility remains untouched.

**NAME:** Alpco Recycling, Inc.

**LOCATION:** 846 Macedon Center Road, Macedon, New York, 14502

**MATERIALS ACCEPTED:** Municipal Solid Waste, Recyclables, (newspaper, cardboard, office paper, plastics 1 and 2, metals, glass), Tires, Yard Waste, White Goods, Scrap Metals.

**TABLE 3-X: RATES FOR SOLID WASTE DISPOSAL AT ALPCO RECYCLING, INC**

TYPE	CHARGE
Trash (under 200 lbs)	10 cents/lb
Trash (200 lbs. and over)	7 cents/lb
Tires	10 cents/lb
Wood/Yard Waste (branches, brush, clean lumber, leaves)	5 cents/lb
Hard fill (bricks, rocks)	1 cent/lb
Freon units	No charge

Source: <http://www.alpcorecycling.com/Residential%20Drop%20Off.htm>

**OPERATIONAL RELATIONSHIP WITH ONTARIO COUNTY:** None. Private business.

---

**NAME:** Mill Seat Sanitary Landfill

**LOCATION:** 303 Brew Road, Bergen, NY 14416

**MATERIALS GUIDELINES:**

**Materials Accepted:** All waste streams permitted at Mill Seat Landfill are done in accordance with NYSDEC Part 360 regulations and any special conditions set forth in the Operating Permit issued by the NYS Department of Environmental Conservation. These waste streams include:

- Municipal Solid Waste
- Special Waste. Special Waste is refers to any Industrial or commercial waste that requires special handling such as: Out Dated Food Waste or Products (eg. pies, ice cream, pizza dough, etc.); Sludge; Liquid Waste (eg. root beer, tomato paste, etc.); Auto Fluff (any non-metallic material from a car); Floor Sweepings; Contaminated Soils - Tank Pulls; Asbestos; Dusty Materials; and Any Process Wastes.
- Construction and Demolition Debris
- Beneficial Use Determination Material and Alternate Daily Cover Materials

**Materials Prohibited:** The following materials are prohibited from *acceptance* at the Mill Seat Landfill:

- All wastes (except BUD) generated outside the borders of New York State
- All wastes from Kings, Queens, New York, Richmond and Bronx Counties (NYC)
- Treated medical waste generated outside Monroe County
- Friable asbestos generated outside Monroe County
- Sludge's generated outside Monroe County
- PCB containing materials greater than 50PPM

The following materials are prohibited from *disposal* at the Mill Seat Landfill:

- |  |   |
|--|---|
| - Hazardous Waste                            | - Tires   |
| - Radioactive Waste                          | - Source Separated Yard Waste   |
| - PCB Contaminated Waste greater than 50 ppm | - Waste identified in 6NYCRR Part 360-1.5(b)  |
| - Liquid Petroleum Products                  | - Lead Acid Batteries (automobile batteries)  |
| - Petroleum Sludge                           | - Any infectious waste; however, regulated medical waste that has been treated and destroyed by a method approved by the NYSDOH may be disposed |
| - Liquids                                    |   |
| - Waste oil                                  |   |

- White goods (refrigerators, freezers, air conditioners, and dehumidifiers)
- Unapproved commercial or industrial waste (Special waste)
- Automobiles
- Any steel or plastic drum or tank larger than 10-gallon capacity that has not had the ends removed or has not been shredded
- Any empty drum or container which has held hazardous waste and is not empty according to 40 CFR 261.7(a)(3)c
- Containers of 5 gallon capacity or larger shall not be disposed at this facility unless the ends have been cut off and the containers have been crushed (This prohibition does not apply to 30-gallon and 55-gallon drums that contain waste toner)
- Any industrial or commercial liquids, sludges, or slurries, which are less than 20 percent solids
- Uncontaminated leaves, grass clippings, brush, branches, stumps and tree sections with the exception of debris that has been contaminated by excessive use of pesticides
- Any waste(s) regulated by 6 NYCRR Part 364 unless the waste hauler possesses a valid Part 364 permit which specifies this landfill as a disposal site for such waste(s) and disposal of such waste has been approved by Monroe County in writing
- Approved commercial or industrial waste not handled by a waste hauler who possesses a NYSDEC Part 364 Waste Transporter Permit

**FACILITY HISTORY:** The landfill, which opened in 1993, was originally operated by Monroe County. In the late 1990s, the County determined it lacked the resources necessary to run the landfill and issued an RFP to prospective operators. Today, Monroe County owns the landfill and leases it to Waste Management of New York, LLC, which assumed the operation of the Mill Seat Landfill on January 15, 2002.

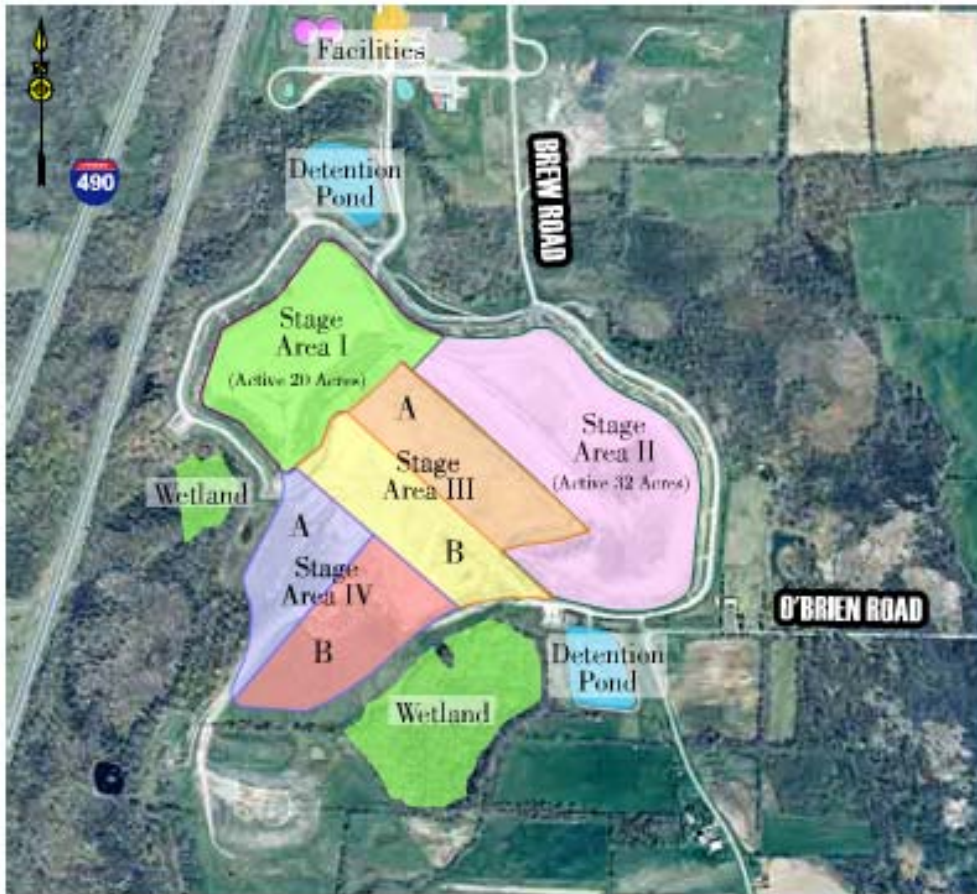
**SIZE, CAPACITY, & LIFE EXPECTANCY:** The landfill's total property occupies some 385 acres. The footprint of the landfill is 98.6 acres. The construction cost was approximately \$60 million. The design capacity is for 1,945 tons per day. Stage one and stage two of the landfill comprise 52.3 acres. Future stages three and four, approximately 46.3 acres. The site life is expected to last until the year 2018.

**TABLE 3-X: MILL SEAT LANDFILL SIZE, BY STAGE**

STAGE	ACREAGE	MAXIMUM HEIGHT	YEAR CONSTRUCTED
Stage 1 Area	19.6	200	1993
Stage 2 Area	32.7	200	1994
Stage 3A	12	200	2002
Stage 3B	12	200	2005
Stage 4A	11.1	200	2008
Stage 4B	11.1	200	2011

Source: <http://www.millseatlandfill.com/>

**FIGURE 3-X: MILL SEAT LANDFILL SITE PLAN**



Source: <http://www.millseatlandfill.com/>

There are numerous facilities that support the landfill, including the scale house, administration building, leachate storage tanks, leachate transfer loading facility, refueling station, and maintenance building.

Scale House: All trucks carrying waste materials to the solid waste management facility go over the scales (inbound and outbound) at the solid waste management facility. The trucks weight, license plate number, hauler, generator, material type, and image are recorded for each transaction. The scale house keeps track of all waste that enters the solid waste management facility and serves as one step in the multi-tiered screening process of waste entering the facility.

Administration Building: The building houses the management staff (District Manager, Site Supervisor) of the facility. Records and plans are kept at this building. In addition, training takes place here.

Leachate Storage Tanks: The leachate storage tanks are glass lined tanks with a storage capacity of approximately 1.5 million gallons each. The tanks temporarily store leachate prior to trucking the leachate to the Van Lare wastewater treatment plant. The storage tanks are surrounded by an earthen containment system that provides secondary containment for the storage tanks.

Leachate Transfer Loading Facility: Tanker trucks use the transfer facility to receive leachate that was collected from the landfill and stored in the leachate storage tanks.

Refueling Station: The refueling station contains three aboveground storage tanks, which have secondary containment. The tanks consist of two 10,000 gallon diesel fuel tanks and one 1,500 gallon gasoline tank. This refueling station is utilized by on-site vehicles.

Maintenance Building: The maintenance building is utilized by on-site personnel to maintain the site vehicles. These vehicles include trash compactors, excavators, bulldozers, and dump trucks.

**FIGURE 3-X: MILL SEAT LANDFILL FACILITIES**



Source: <http://www.millseatlandfill.com/>

**OPERATIONAL RELATIONSHIP WITH ONTARIO COUNTY:** None. The Landfill is owned by Monroe County and is operated by Waste Management. The landfill accepts waste produced by Ontario County.

The benefits paid since the opening of the Mill Seat Landfill in 1993 are summarized in Table 3-X.

**TABLE 3-X: BENEFITS PAID RELATED TO MILL SEAT LANDFILL**

<b>COMMUNITY BENEFACTOR</b>	<b>BENEFIT</b>
Town of Riga (Revenue Sharing)	\$1,611,477 in 2005, Over \$8,450,415 since opening
Town of Riga residents	FREE household garbage & recycling annual cost est. \$516,000 App. \$250.00 for YOU
Byron-Bergen Central School	Close to \$620,000 to date
Bergen Fire Department	Close to \$61,000 to date
Water Supply Protection Program	Over \$12,100,000 since 1993, \$1,000,000 slotted for 2005
Purchases of goods and services	\$5,000,000 annually
Water Main Improvements	\$12,100,000 since opening, \$1,000,000 forecasted
Property Value Protection (104 Residential Properties)	\$207,000 to date
Jobs	50 Construction, 15 Permanent

Source: <http://www.millseatlandfill.com/>

Mill Seat Landfill and the Town of Riga, as a landfill business partner, maintain a partnership that provides the Town of Riga with monetary benefits (revenue sharing) in return for the privilege of operating the landfill. The monetary benefit is tied directly to the tons of material disposed at the site.

**PERMIT & COMPLIANCE SUMMARY:** In accordance with Mill Seat Landfill's NYSDEC Permit Number 8-2648-00014/1-0 Mill Seat Landfill is required to maintain and satisfy numerous environmental permits and plans, these include:

- Solid Waste Permit
- Monroe County Industrial User Permit
- Title V Permit
- Operation and Maintenance Plan
- Environmental Monitoring Plan
- Site Analytical Plan
- Contingency Plan
- Spill Prevention Control and Countermeasure Plan

---

**NAME:** Albany Rapp Road Landfill

**LOCATION:** Albany, NY

**SIZE, CAPACITY, & LIFE EXPECTANCY:** Under its currently approved permit, the Rapp Road Landfill is permitted to accept up to 1,050 tons per day of non-hazardous solid waste, based on a 30 day rolling average. Between 2003 and 2008, the landfill accepted an average of about 246,800 tons per day. With the approval of the Part 360 permit for the Eastern Expansion, this facility can continue to operate through the year 2016, based on a waste acceptance rate of 277,200 tons per year (TPY). The NYSDEC permits to construct and operate the Eastern Expansion were issued on June 25, 2009, with an expiration date of June 25, 2019. After the capacity of the Eastern Expansion is exhausted, there will be no future active landfill operations at the Rapp Road site, and other solid waste management or disposal alternatives will need to be provided.

**OPERATIONAL RELATIONSHIP WITH ONTARIO COUNTY:** While the Rapp Road Landfill is the primary municipal solid waste disposal facility in the Capital Region Planning Unit, it plays a very minor role in waste disposal for Ontario County. In 2009 it accepted just 1.98 tons of waste from Ontario County.

---

**NAME:** Allied Waste Niagara Falls Landfill

**LOCATION:** 56th Street & Niagara Falls Boulevard, Niagara Falls, NY

**MATERIALS GUIDELINES:** The facility accepts Ash (Coal-Bottom), Ash (Coal-Fly), Ash MSW Energy Recovery Combined, Ash (WWTP Sludge), Asbestos (Non-Friable), Construction & Demolition Debris, Sludge (Industrial), Asbestos (Friable), Waste Tires, MSW (Residential/Institutional & Commercial)

**OPERATIONAL RELATIONSHIP WITH ONTARIO COUNTY:** This facility plays a relatively minor role in the disposal of waste produced in Ontario County. In 2009, the facility accepted only four tons of asbestos waste from the County.

---

**NAME:** Waste Management Chaffee Landfill CID

**LOCATION:** 10860 Olean Road, Chaffee, NY, 14030

**MATERIALS GUIDELINES:**

**Materials Accepted:** Chaffee Landfill accepts waste streams in accordance with the following regulations to ensure Waste Management does not receive any Hazardous Waste or Non-Acceptable Waste:

- Federal Regulations
- NYSDEC Part 360 Regulations: Subtitle D

- New York State Operating Permit Specific by Landfill Compliance

All waste streams permitted at Chaffee Landfill are done in accordance with NYSDEC Part 360 regulations and any special conditions set forth in the Operating Permit issued by the NYS Department of Environmental Conservation. These waste streams include:

- Municipal Solid Waste (MSW),
- Special Waste,
- Construction and Demolition Debris, and
- Beneficial Use Determination (BUD) Material and Alternate Daily Cover Materials.

**Materials Prohibited:** The following materials are PROHIBITED from disposal at the Chaffee Landfill:

- Hazardous Waste
- Radioactive Waste
- PCB Contaminated Waste greater than 50 ppm
- Liquid Petroleum Products
- Petroleum Sludge
- Liquids
- Waste oil
- Tires
- Source Separated Yard Waste
- Waste identified in 6NYCRR Part 360-1.5(b)
- Lead Acid Batteries (automobile batteries)
- Any infectious waste; however, regulated medical waste that has been treated and destroyed by a method approved by the NYSDOH may be disposed
- White goods (refrigerators, freezers, air conditioners, and dehumidifiers)
- Unapproved commercial or industrial waste (Special waste)
- Automobiles
- Any steel or plastic drum or tank larger than 10-gallon capacity that has not had the ends removed or has not been shredded
- Any empty drum or container which has held hazardous waste and is not empty according to 40 CFR 261.7(a)(3)
- Containers of 5 gallon capacity or larger shall not be disposed at this facility unless the ends have been cut off and the containers have been crushed (This prohibition does not apply to 30-gallon and 55-gallon drums that contain waste toner)
- Any industrial or commercial liquids, sludges, or slurries, which are less than 20 percent solids
- Uncontaminated leaves, grass clippings, brush, branches, stumps and tree sections with the exception of debris that has been contaminated by excessive use of pesticides
- Any waste(s) regulated by 6 NYCRR Part 364 unless the waste hauler possesses a valid Part 364 permit which specifies this landfill as a disposal site for such waste(s) and disposal of such waste has been approved by Monroe County in writing
- Approved commercial or industrial waste not handled by a waste hauler who possesses a NYSDEC Part 364 Waste Transporter Permit

**FACILITY HISTORY:** The Chaffee facility site was a farmstead, prior to its use as a disposal area. It was converted to a landfill under the ownership and direction of Mr. Hugh Smith in 1958. Chaffee Landfill, Inc., Richard Penfold, President, acquired the 36-acre landfill and associated properties in October 1977. USA Waste, which later merged with Waste Management Inc., purchased all the properties held by C.I.D. Landfill, Inc. north and south of Hand Road in 1998

**SIZE, CAPACITY, & LIFE EXPECTANCY:** The existing 50.93-acre Chaffee Landfill is located on a 487.7-acre parcel of land wholly owned by Waste Management of New York, LLC, including mineral rights. The design capacity is for 600,000 tons per year of solid waste and 120,000 tons per year of beneficial use determination (BUD) materials. The new waste footprint of the landfill expansion is 52.5-acres and the new developed area (including perimeter berms, roads and leachate storage tanks) is 74-acres. The anticipated site life of the permitted limits of the existing Chaffee Landfill is expected to last until 2010. The expansion will extend the site life by 15 to 20 years, depending on the rate of waste receipt.

The existing landfill and associated support buildings, roads, borrow areas, and ponds occupy approximately 188.7 of the 487.7 acres. The site has seven major structures including:

- A scale house used to weigh and record incoming waste tonnage,
- A maintenance facility for maintaining landfill operating equipment, which also includes an equipment truck wash area,
- A recycling facility, used to recover plastic containers and cardboard dropped at the facility by residential and commercial customers,
- A grounds maintenance building that is used to house and maintain mowing and ground keeping equipment, and
- The main office.
- Power plant.
- Leachate Loadout building.

**OPERATIONAL RELATIONSHIP WITH ONTARIO COUNTY:** The Chaffee Landfill plays a relatively minor role in the disposal of waste produced in Ontario County. In 2009, it accepted just 292.2 tons of industrial waste from Ontario County.

The benefits Chaffee Landfill has paid since 2002 are summarized in the following Table 3-X.

**TABLE 3-X: BENEFITS PAID RELATED TO CHAFFEE LANDFILL**

<b>COMMUNITY BENEFACTOR</b>	<b>BENEFIT</b>
Town of Sardinia	\$716,417.73 in 2008.
(Revenue Sharing)	Over \$3,021,682.79 since 2002.
Town of Sardinia	\$500,000.
(one time payment in 2004)	
Town of Sardinia Payment based on Airspace	\$637,651 to date.
Town of Sardinia residents	<b>FREE</b> household garbage & recycling for residents. \$330,234.45 to date.
Household Hazardous Waste Collection Days (9 Events from 2004-2008)	Estimated \$15,000/event.
	\$135,000 to date.
Payments to National Fuel to Heat the Sardinia Pool and	\$18,847 to date.

Lavatory	
Donated Town of Sardinia Municipal Service	\$446,076 to date.
Reduced Pricing to Commercial Customers per Host Community Agreement	\$127,692 to date.
Chaffee Landfill and the Town of Sardinia maintain a partnership that provides the Town of Sardinia with monetary benefits (revenue sharing) in return for the privilege of operating the landfill. The monetary benefit is tied directly to the tons of material disposed at the site.	

Source: <http://chaffeelandfill.com>

DRAFT

## DESCRIPTION OF RECYCLABLE MATERIALS AND POTENTIAL MARKETS

The following information was collected from the 1992 Ontario County SWMP and various websites related to Solid Waste Management, particularly Earth911.

### PAPER

Paper has a long lifespan and can be recycled several times before finally breaking down into pulp too small to use. Paper products currently make up about 40 percent of solid waste in the U.S. Still, recycled paper is attractive to all parts of the market. Companies use less energy and fewer resources when using paper made from recycled materials, and consumers, in turn, benefit from those savings. In 2007, 56 percent of the paper used in the U.S. was recovered for recycling. That equates to an average of 360 pounds of paper recovered per person in the United States. Because of this high recovery rate, the paper industry set a new goal of a 60 percent recovery rate by 2012.<sup>1</sup>

- **Corrugated Cardboard:** It is comprised of corrugated fiber paper, sandwiched by sturdy sheets of cardboard. Once this cardboard has been deposited into the trash or recycling bin, it is referred to as old corrugated cardboard, or OCC. Corrugated cardboard is used to make boxes and other containers for shipping materials. When not wet or contaminated with food or oil, cardboard is recyclable. It is also naturally biodegradable. If the cardboard has a waxy coating, then it may need to be thrown out.
- **Paperboard:** Paperboard, also called boxboard or chipboard, is flat, stiff, and often coated to give a glossy appearance. Examples include drink boxes, cereal containers, detergent packaging, shoe boxes and tissue containers. Recycled paperboard represents one of the largest markets for recycled paper in the United States. Paperboard is recycled using a single-grade process, meaning no other type of paper is mixed in during manufacturing.
- **Brown Bags:** Brown bags are dispersed at grocery, fast food, and other stores for containing purchases. Brown bags may be recycled.
- **High Grade Paper:** This category includes computer paper, ledger paper, envelopes, copy paper, and notebook paper. Computer paper, which is made primarily from hardwood trees like oak and maple, is one of the most prevalent and easy-to-recycle types of paper made today.<sup>1</sup> It can be recycled between five and seven times before it is no longer usable and is commonly converted to printing paper, writing paper, and tissues products (paper towels, napkins, and toilet paper). It is easily recyclable and is accepted by most vendors and paper mills.
- **Newspaper:** This paper category consists of used or unsold newspapers and may include coated advertisement inserts. Newspapers are recycled into a number of products. One of the most common is new newsprint. According to the Newspaper Association of America (NAA), the average newspaper contains 30 percent recycled fiber content. Newspapers are also recycled into other products, since it is often more cost-effective to recycle them locally, rather than ship them to distant mills for recycling into new newsprint. According to the NAA, newspaper is often recycled into:

---

<sup>1</sup> Source: <http://earth911.com>

- Cereal Boxes
  - Egg Cartons
  - Pencil Barrels
  - Grocery Bags
  - Tissue Paper
  - Cellulose Insulation Materials
- **Other Paper:** This category includes a variety of paper products from a multitude of sources including homes and offices. Paper products include uncontaminated food packaging, cereal boxes, magazines, and junk mail. Mixed papers can be recycled as roofing felt and construction board. The demand for other, or mixed, paper is lower than for other grades of paper. A large percentage of this category is exported to other countries.
  - **Magazines:** This category includes all types of magazines, including coated paper and stapled bindings. Because magazines and catalogs tend to contain more ink, they often undergo a different recycling process than office and other types of paper. Typically, the recycled content of newspaper stock will be 70 percent old newspapers and 30 percent old magazines. An alternative to recycling magazines is donating them to be reused.

*LOCAL MARKETS FOR SPECIALIZED RECOVERED RECYCLABLES*

***PAPER***

**Fox Run Recycling, Inc.**

12 North Park Street

Seneca Falls, NY 13148

Seneca County

<http://www.foxrunrecycling.com/>

*Specifics:* corrugated cardboard, newspaper, 1 and 2 plastics, tin

*Business Type:* Recyclables broker

**METALS**

Steel is the most recycled material in North America, and it can be infinitely recycled and turned into new steel products. Aluminum cans are the most valuable beverage containers to recycle and are the most recycled consumer product in the United States today.

- **Ferrous Metals:** Ferrous metals are metals derived from, or containing, iron. Steel is the most common of these metals, including alloys such as stainless steel. The most common objects containing ferrous metals are food cans (made of steel and/or tin), automobile

parts, household appliances (aka “white goods”), and construction beams. Ferrous metals can also be found in broken tools, small household appliances, toys, and residue from magnetic cleansers in a composting facility.

- **Aluminum Cans:** The aluminum can is the most valuable beverage container to recycle. Aluminum is a durable and sustainable metal: two-thirds of the aluminum ever produced is still in use today.
- **Aluminum Foil:** Aluminum is durable and can be reused over and over again. Aluminum foil is technically just as recyclable as aluminum cans, but the challenge is that aluminum foil is often dirtier, thus making it harder to recycle.
- **Furniture:** This includes discarded aluminum and other non-ferrous furnishings from homes, office, and institutions. Aluminum furniture is recyclable through scrap metal dealers, may be donated, or sold second-hand.
- **Structural:** Structural non-ferrous items include aluminum auto parts, housing and mobile home components not discarded as C & D and other substantially heavy non-ferrous items. These may be recycled at local scrap dealers.
- **Housewares:** Non-ferrous housewares include discarded aluminum tools (snow shovels, rakes, wrenches), wiring not discarded as C&D, aluminum appliances, and toys. These may be recycled at local scrap dealers. Housewares may be recyclable through scrap metal dealers, may be donated, or sold second-hand.

## ***METAL***

### **Alpco Recycling, Inc.**

846 Macedon Center Road

Macedon, NY

Wayne County

<http://www.alpcorecycling.com>

*Specifics:* brass, aluminum, steel, tin, copper, cast iron, radiators, auto batteries, engine blocks, transmissions

*Business Type:* Purchaser, Processor

---

### **Becks Recycling**

982 State Route 21

Shortsville, NY

Ontario County

<http://www.becksrecycling.com>

*Specifics:* Scrap metals (industry, auto wreckers, municipalities, demolition contractors, farms, scrap yards, bridge contractors)

*Business Type:* Purchases, Processor

## ***GLASS***

Glass is made of four basic ingredients: sand, soda ash, limestone, and, depending on the type, colorants. Once a glass container has been colored it cannot be made into a different color. Glass is one of the most popular materials recycled today, both because of the purity of the ingredients and the quick turnaround of recycling. Similar to paper, glass comes in a variety of colors, which comes into play in the recycling process. Glass can be recycled indefinitely and not lose its quality. About nine in ten glass containers are recycled to produce more glass containers. What isn't used typically ends up as decorative kitchen tile, insulation or even as road building material. High-quality purified crushed glass (aka cullet) will be used to make glass containers, abrasives, fiberglass or beads. Lower quality cullet may be used as insulation, road aggregate or decorative tile.

- **Amber/Brown Glass:** Nickel, sulfur and carbon are added to molten glass during manufacturing to give it a brown color. The most common use for brown glass is the production of beer bottles. The amber tint reflect ultraviolet light and protects the product inside from direct sunlight, thus preserving freshness and flavor.
- **Green Glass:** Green glass is colored by adding metals such as iron, chromium or copper to the molten glass during production. Green glass has more variety of shades than any other color, making it a popular color choice for bottles. It also helps keeps sunlight and temperature from affecting the contents inside.
- **Clear Glass:** Clear (aka colorless) glass is most often made of a combination of silica (sand) and other substances. It is most often used to store solid materials, but is also used for beverages.
- **Flat Glass:** Flat glass includes all types of household window glass and mirrors. It can be considered a contaminant to container glass recycling.
- **Other Glass:** This category includes all other glass which has not been included in the above categories. Items in this category include glass cookware, electrical insulators, ceramic household and automotive items, automotive glass, etc. This type of glass can be used as an aggregate and filler in asphalt.

*LOCAL MARKETS FOR SPECIALIZED RECOVERED RECYCLABLES*

**GLASS**

**Trilogy Glass (Casella Waste Systems)**

3555 County Road 49

Stanley, NY

Ontario County

[www.casella.com](http://www.casella.com)

*Specifics:* Glass (color-sorted containers, color mixed containers)

*Business Type:* Collector/Hauler; Processor

**PLASTICS**

Plastics are denoted by number; each number represents the *type of resin* made to produce the plastic. These numbers are plastic #1, #2, #3, #4, #5, #6 and #7. Because each resin is different, these numbers affect how and where you can recycle plastics. The American Chemistry Council distinguishes between the follow plastics.

- **Polyethylene Terephthalate (PET) #1:** PET is clear, tough, and has good gas and moisture barrier properties. This resin is commonly used in beverage bottles and many injection-molded consumer product containers. Cleaned, recycled PET flakes and pellets are in great demand for spinning fiber for carpet yards, producing fiberfill and geotextiles.
- **High Density Polyethylene (HDPE) #2:** HDPE is used to make many types of bottles, including those for milk, water, juice, cosmetics, shampoo, dish and laundry detergents, and household cleaners. It is also used to make plastic shopping bags, cereal box liners, and reusable shipping containers. Recycled HDPE can be used to make the aforementioned types of bottles, plastic lumber, piping, floor tiles, buckets, crates, flower pots, film, and recycling bins.
- **Polyvinyl Chloride (PVC, Vinyl) #3:** Plastic #3 has a resistance to grease, oil, and chemicals and has high impact strength. When recycled, it can be used in for a variety of construction purposes (e.g. piping, decking, fencing, paneling, gutters, carpet backing, floor tiles and mats, resilient flooring, electrical boxes, cables), mud flaps, traffic cones, garden houses, and mobile home skirting.
- **Low Density Polyethylene (LDPE) #4:** LDPE is used predominantly in film applications due to its toughness, flexibility and relative transparency. It can be found in such products as bags for dry cleaning, newspapers, bread, frozen foods, fresh produce, and household garbage; shrink wrap, container lids, squeezable bottles, and coatings for paper milk cartons and hot and cold beverage cups. When recycled, the byproduct can be used to manufacture shipping envelopes, garbage can liners, floor tine, paneling, furniture, film and sheet, compost bins, trash cans, landscape timber, and outdoor lumber.
- **Polypropylene (PP) #5:** PP has good chemical resistance, is strong and has a high melting point, making it good for hot-fill liquids. This resin is found in flexible and rigid packaging, fibers, and large molded parts for automotive and consumer products. When recycled, PP's byproduct can be used to manufacture automobile applications (e.g. battery cases, signal lights, battery cables, brooms and brushes, ice scrapers, oil funnels, and bicycle racks), garden rakes, storage bins, shipping pallets, sheeting, and trays.
- **Polystyrene (PS) #6:** Typical applications include protective packaging, foodservice packaging, bottles, and food containers. When recycled, PS's byproduct can be used to manufacture thermal insulation, thermometers, light switch plates, vents, desk trays, rulers, license plate frames, cameras or video cassette casings, foamed foodservice applications, plastic mouldings, and expandable polystyrene foam protective packaging.
- **Other #7:** Use of this code indicates that a package is made with a resin other than the six listed above or is made of more than one resin and used in a multi-layer combination. This is commonly found in three-and five-gallon reusable water bottles, some citrus juice and catsup bottles, oven-baking bags, and custom package. The recycled contents may be used in bottles and plastic lumber applications.

*LOCAL MARKETS FOR SPECIALIZED RECOVERED RECYCLABLES*

***PLASTICS***

**Kaplan Container**

130 Despatch Drive

East Rochester, NY

Monroe County

[www.kaplancontainer.com](http://www.kaplancontainer.com)

*Specifics:* Plastics (1,2,3,4,5,6, film, engineered plastics)

*Business Type:* Processor

*Minimum amount required for Business:* 10 tons

***ELECTRONICS***

Electronics have the potential to cause the most environmental damage because of their hazardous ingredients. Electronic Waste (aka E-waste) is growing at three times the rate of other municipal waste. Although e-waste accounts for only 1 to 4 percent of municipal waste, it may be responsible for as much as 70 percent of the heavy metals in landfills, including 40 percent of all lead. E-waste contains materials such as glass, copper, aluminum, plastic and other components can often be extracted and reused.

The United States Postal Service and Clover Technologies partnered to provide consumers with free postage for the recycling of certain small electronic devices. Customers can pick up envelopes in 1,500 Post Offices. Clover will pay the postage on these items in the hopes they can be refurbished. If not, the components will be recycled. Items that can be recycled include: Inkjet cartridges; PDAs; Blackberries; digital cameras; iPods, and MP3 players.

- **Cell Phones:** The usage of cell phones has increased astronomically since they were first made available to the public in 1984. According to a study by Strategy Analytics, 1.1 billion cell phones were sold in 2007. If disposed of improperly, cell phones can pollute the surrounding soil and water because they contain toxic materials such as arsenic and zinc. When recycled, some cell phones are broken down into their raw materials. Other are refurbished and sent to other countries for purchase in consumer markets. There are several nation cell phone recycling programs: [Motorola](#), [Nokia](#), [Call2Recycle](#), [National Coalition Against Domestic Violence](#), [Call to Protect](#), [Verizon Wireless](#), [AT&T Wireless](#), [T-Mobile Wireless](#), [Sprint Wireless](#).
- **Televisions:** The U.S. EPA estimates that 82 percent of televisions, or 20.6 million units, were disposed of, primarily in landfills, between 2006 and 2007. That means only 18

percent, or 6.3 million units, were recycled. Televisions contain hazardous materials (most notably lead) that can leach out of landfills over time. Many areas have banned televisions from landfills because of the hazards of lead leachate.

- **MP3 Players:** The batteries and other parts of most MP3 devices can be recycled or returned to most manufacturers, free of charge.
- **CDs and DVDs:** There are three main components to consider when recycling CDs and DVDs as each is made of different materials. Cover and Liner Notes are generally made from paper and relatively easy to recycle. Discs contain plastics, metals, and ink. Discs are made mostly from polycarbonate, although a small amount of lacquer is also used as a protective coating. Aluminum is the primary metal in discs, but traces of gold, silver and nickel are also present. The dyes used in printing on the disc itself contain some petroleum products, but when it comes to recycling, only metal and plastic are processed. *Jewel Cases* are generally made of plastic #6, a cheap, but hard-to-recycle materials. Of the three components, jewel cases are generally the most difficult to recycle.
- **Video Games:** Many of the most common video game consoles contain hazardous chemicals and materials such as polyvinyl chloride (PVC); phthalates, beryllium, and bromine. The consoles also contain circuit boards like hard drives, which contain lead that can leach out of landfills and into the water supply.
- **Inkjet Cartridges:** The average toner cartridge is composed of 40 percent plastic, 40 percent metal, and smaller amounts of rubber, paper, foam, and toner. Many companies now pay for used cartridges which they remanufacture and resell. Local office supply stores often offer incentives to recycle cartridges, such as returning a cartridge in exchange for a ream of paper. Collection of inkjet cartridges can also be used as a fundraiser. E-waste drop-offs also often accept used printer cartridges.
- **Computers:** Computers are a primary contributor to electronic waste (e-waste), posing a major disposal issue because they are made up of various components that are toxic to the environment. The Institute for Local Self-Reliance estimates that 75 percent of obsolete electronics are currently stored, but with continued innovations in technology, there is an increasing opportunity to recycle computers, limiting the number that end up in landfills.
- **Computer Monitors:** Computer monitors are made of plastic, glass and metal. Some also can contain lead, from the color cathode ray tube (CRT), which creates the images on the screen.

LOCAL MARKETS FOR SPECIALIZED RECOVERED RECYCLABLES

**ELECTRONICS**

**Regional Computer Recycling & Recovery**

7318 Victor-Mendon Rd.

Victor, NY

Ontario County

<http://www.ewaste.com/>

*Specifics:* Electronics (cell phones, monitors, CRTs, whole units, confidential equipment destruction, televisions, hard drives, circuit boards, printers); Batteries

*Business Type:* Collector/Hauler; Processor/Reuse/Materials Exchanges

*Amount of Material handled per month:* 200 tons per month

*Minimum amount required for Business:* Free drop off anything under 5 lbs; Rochester area residents only

**TABLE 3-X: REGIONAL COMPUTER RECYCLING & RECOVERY ELECTRONICS RECYCLING PARTNERS**

NAME	ADDRESS	MUNICIPALITY	HOURS	TYPE
Lone Wolf Computers	2375 Rochester Road	Canandaigua	M-F: 9-5:30 Sat: 9-1:00	PC equip. only
PC & Wireless Shop	699 South Main Street	Canandaigua	M-F: 9-8:00 Sat: 10-8:00 Sun: 12-5:00	PC equip. only
Town of Canandaigua	5440 Routes 5 & 20	Canandaigua	W: 4:30-8 Sat & Sun: 8-12	PC equip. & TVs
Alpha Computing Inc	84 Castle Street	Geneva	M-F: 8-5	PC equip. only
Superior Electronics	800 Pre-Emption Road	Geneva	M-F: 9-5 Pick-up Service Available	PC equip. only
The UPS Store- Geneva	300 Liberty Commons	Geneva	M-F: 9-6 Sat: 10-2	PC equip. only
Laser Genesis	27 West Main Street	Shortsville	M-F: 8-5	PC equip. only
The UPS Store-Victor	106 Cobblestone Court	Victor	M-F: 9 -6 Sat: 10-2	PC equip. only
Men of Steel	Residential Pick-up only	N/A	By appointment	PC equip. & TVs

## ***ELECTRONICS, CON'T***

### **Imagine It Recycling**

Monroe County

<http://imaginerecycling.com>

*Specifics:* printer cartridges, cell phones and PDAs, Mobile devices (laptops, digital cameras, camcorders, GPS navigation, LCD Plasma, Gaming devices, mp3 players, hard drives)

*Business Type:* Fundraising through recycling

### **CONSTRUCTION AND DEMOLITION DEBRIS**

Construction and Demolition Debris (C & D) is comprised of uncontaminated waste generated from construction and remodeling projects and the repair and demolition of structures and roads. It also includes vegetation and brush from land clearing, utility line maintenance, and seasonal and storm related clean-up. C & D waste includes rubble such as bricks, concrete, and other masonry materials, soil and rock; wood based materials such as pallets, stumps and tree parts from land clearing, framing and siding lumber from construction projects and treated wood; and mixed C & D materials such as wall coverings, plaster, sheetrock, gypsum, and drywall, plumbing fixtures, non-asbestos insulation, roofing shingles, ferrous and non-ferrous metals, plastics, glass, and corrugated cardboard.

- **Wood:** Wood is the only 100 percent renewable, recyclable, reusable and biodegradable resource. Beyond typical household reuse, recycled wood can become a number of products, such as lumber, engineered wood products, mulch or compost feedstock, biomass fuel and other miscellaneous items such as animal bedding or wood flour.
- **Brick:** Unused brick can be recycled. New brick that fails to meet the manufacturers' standards can be recycled through a crushing process, creating "brick chips." Those brick chips can be used as a landscape material, or can be reground through the manufacturing process to create new, quality brick.
- **Carpet:** There are many different kinds of carpet, and nearly all are recyclable. Depending on the face fiber, carpet can be broken down and used to make a new product. It may be used to make composite lumber, tile backer board, roofing shingles, railroad ties, automotive parts or carpet cushion. That said, according to the Carpet America Recovery Effort (CARE), carpet is difficult to recycle because of the many substances that constitute it. For example, in a typical carpet, the two main components are the face fiber and the backing system. The face fiber is what you see and walk on, is the most valuable portion of the carpet for recycling and is typically made of:

- Nylon 6,6
- Nylon
- Polypropylene (also called “olefin”)
- Polyester

The second portion of the carpet structure is the backing system. The most common types of backing are:

- Polyvinylchloride (PVC) – Primarily used in the commercial sector
- Latex – Typically used in residences

Backing also contains:

- Additional layers – Such as polypropylene
- Fillers – Such as calcium carbonate

Because of this complex system and the numerous substances within it, recycling carpeting is difficult and often comes at a charge to cover the steps involved, such as separation, shredding and handling.

- **Carpet Padding:** Carpet padding is installed beneath carpet to protect and increase the life of the carpet. It serves as both an insulator and sound dampener and comes in several different styles. Although there are various thicknesses and densities in each, the three broad categories of carpet padding are fiber, rubber and foam. 1) *Fiber*. In this padding, natural fibers, such as wool or jute, or synthetic fibers such as nylon and polyester, are woven together into a pad that resembles a sheet of felt. These types of pads are made from new and recycled materials. Though jute is not recyclable, it does biodegrade and is plentiful. 2) *Rubber*. Rubber padding provides more cushion than fiber padding, and it is more resistant to moisture and odors. Rubber padding is also made from new and recycled materials. 3) *Foam*. Today, foam comprises nearly 90 percent of all carpet padding produced and sold in the United States. The main reason for this is the ease in which foam padding can be recycled. When carpet pads are recycled, they are collected, cleaned, chopped up and combined with post-industrial foam scrap to create what is known as bonded foam (or rebond). Rebond contains scrap foam from furniture, bedding, and automobile manufacturers.
- **Gypsum Drywall:** Gypsum drywall is the primary material used for interior walls in the construction of houses in the U.S. It is made up of gypsum covered on both sides by paper. Gypsum itself is a naturally occurring rock. Some other commonly known names for drywall are gypsum board, wallboard, plasterboard, gypboard and sheetrock. Gypsum is recyclable. It has also been shown to be a useful soil amendment because it improves water penetration, softens soil with a high level of clay content, neutralizes soil acidity, and adds nutrients such as calcium and sulfur. It is being used in general agriculture; mushroom growing; forestry and mine reclamation; nurseries; parks and recreation area, residential laws, golf courses, and in compost as an additive.
- **Linoleum:** Linoleum is a type of floor covering most often made from solidified linseed oil that is combined with wood flour or cork dust. This mixture is then used to cover burlap or canvas, in turn creating linoleum. Linoleum manufacturers feed all scrap materials back into the production line, virtually eliminating all waste. It is incorrectly referred to as vinyl flooring, but it is actually comprised of all natural materials. Natural

linoleum can be composted or landfilled because it is biodegradable. When properly prepared into smaller pieces, and in the presence of suitable conditions with proper minerals, linoleum decomposes. This releases carbon, which can then be used by various forms of microbes and fungi, creating healthy and organic compost for your garden or lawn. Alternately, linoleum can be used as fuel, since it produces energy equivalent to coal and releases the same amount of carbon which its natural constituents absorb.

- **Pallets:** Pallets are made from several materials.
  - *Softwoods*, the most common type of pallet, are the cheapest to create and are often considered to be “expendable” – meaning they end up in the trash once they reach their destination.
  - *Hardwood* pallets and those made of plastic or metal are slightly more expensive and end up being resold or returned to the sender once the load has been delivered.
  - Made of *polyvinyl chloride* (PVC) and high density polyethylene (HDPE), plastic pallets account for approximately two percent of those made. They cost more but are more durable than wooden pallets.
  - *Metal* pallets, typically made from steel or aluminum, make up less than one percent of the pallet market but are best used for transporting hazardous waste.
  - New to the industry in the past 15 years are *paper* pallets, which are made from corrugated cardboard and molded wood pulp, making them much lighter than other types of pallets.

Due to the cost, pallets made from plastic, metal and some hardwoods, are typically resold or returned to the sender when the product is unloaded. Once returned, they can be reused or recycled through various recycling companies. For cheaper softwood pallets, recycling is the best option. According to the Virginia Tech Center for Forest Products Marketing, nearly 170 million wood pallets are repaired and recycled each year. When wooden pallets are no longer useful, they can be recycled into mulch for landscapes; fuel pellets; pressed logs; composting agent to increase air flow and decomposition; pet bedding; and medium density fiberboard.

## CONSTRUCTION & DEMOLITION DEBRIS, WOOD

### Pioneer Millworks

1180 Commercial Drive

Farmington, NY

Ontario County

[WWW.PIONEERMILLWORKS.COM](http://WWW.PIONEERMILLWORKS.COM)

*Specifics:* C & D( clean wood, uses reclaimed and sustainable wood in the form of timbers, joists, and boards for reuse and remanufacturing); Reusable/Salvageable (building materials)

*Business Type:* Processor/ReManufacturer; Reuse/Materials Exchanges

*Amount of Material handled per month:* 120,00 board feet per month

*Minimum amount required for Business:* prefer truckload quantities

---

### Flower City HFH Restore

755 Culver Road

Rochester, NY

Monroe County

[www.rochesterhabitat.org](http://www.rochesterhabitat.org)

*Specifics:* Reusable Salvageable (equipment/appliances; furniture; building materials; architectural salvage; paints/coatings); Other (cabinets, doors, flooring, furniture, hardware, heaters, lighting, fans, plumbing, wall coverings, windows)

*Business Type:* Reuse/Materials Exchanges

## CONSTRUCTION & DEMOLITION DEBRIS, WOOD CON'T

### GP Land and Carpet Corporation

5905 Lake Road South

Rochester, NY

Monroe County

[www.gpcarpet.com](http://www.gpcarpet.com)

*Specifics:* Carpet (nylon, polypropylene, carpet tile, commercial carpet only). operates a joint venture with Conigliaros in Massachusettes to turn grind carpet and mix it with concrete to form concrete blocks for construction. Also sella carpet with recycled content

*Business Type:* Collector/Hauler; Processor; ReManufacturer

*Amount of Material handled per month:* 3,000 square yards.

*Minimum amount required for Business:* 300 square yards minimum

---

### Ongweoweh Corp

767 Warren Road

Ithaca, NY 14852

Tompkins County

<http://www.ongweoweh.com/>

*Specifics:* distributing, managing, recovering, and recycling more than 17 million pallets

*Business Type:* Distributor, Manager, Recovery of Pallets

### AUTOMOTIVE

- **Tires:** Rubber is difficult to recycle due to the procedure known as “vulcanization,” which it undergoes to attain its springy, flexible nature. Vulcanization is a curing process that involves adding sulfur to rubber, which creates stronger bonds between the rubber polymers. Due to the vulcanization method, tires are difficult to melt for reuse and are therefore typically broken down by a mechanical process. According to the Rubber Manufacturer’s Association, there are three main uses for scrap tires. 1) *Tire-derived Fuel (TDF)* utilizes granulated, tires in the place of traditional fuels in cement kilns, pulp and paper factories, electric utilities and various boilers. TDF is not considered to be genuine recycling, but accounts for an estimated 52 percent of all scrap tires. 2) *Civil Engineering.*

Recycled scrap tires play a meaningful role in civil engineering processes, consuming 16 percent of the scrap tire available in 2005. Tire shreds are cost-effective substitutes for traditional materials when they are used to stabilize weak soil, such as constructing road embankments or as a subgrade (below the ground level of a project) fill. Additionally, tire shreds provide effective subgrade insulation for roads, walls and bridge abutments. 3) *Ground Rubber* or “crumb” rubber, is being used to a greater extent in many states in rubberized asphalt applications and is the largest single use of recycled rubber. Its benefits include noise reduction, shorter breaking distances, reduced road maintenance and more cost-effective, durable road surfaces. Ground rubber also serves a number of sports and recreational purposes. Used in shock-absorbing running tracks and ground cover under playgrounds, the springy and responsive nature of rubber decreases the impact of running or falling. Also added to soil under playing fields, crumb rubber improves drainage and root structure of grass. Ground rubber applications accounted for 12 percent of scrap tire use in 2005.

- **Car Fluids:** Car fluids include oil, transmission fluid, coolant, power steering fluid, and brake fluid. Most of these fluids can be recycled, and depending on specifics, this process can cost significantly less than manufacturing new products. There are three basic methods for recycling motor oil. 1) *Re-refining*. Motor oil is treated to remove impurities and distilled to “base oil,” which, with additives, can be re-refined to produce lubricants, including motor oil, transmission fluid and grease. 2) *Reconditioning*. Impurities are removed through a filtration process and in some cases this less pure oil can be used again. 3) *Reuse or reprocessing*. Many used motor oils or used industrial lubricants can also be used as a heating and energy source for industrial boilers, power plants or combustion facilities. If they cannot be used “as-is,” they can often be reprocessed to remove certain impurities and then used as a fuel. Antifreeze often can be recycled at an auto repair shop equipped with the proper filtration or distillation technology. Contaminants such as oils and heavy metals are removed from the antifreeze through a variety of methods such as include filtration, distillation, reverse osmosis and ion exchange. The antifreeze is restored to “new” antifreeze by adding chemicals that stabilize the fluid and make it more resistant to breakdown. Transmission fluid, power steering fluid and gear oil can also be recycled, reconditioned or reused through similar processes.
- **Auto Bodies:** According to the Motor and Equipment Manufacturers Association, over 76 percent of each scrap automobile is recycled. Almost all the iron and steel of a car is recovered when recycled or reused, as well as lead, aluminum and copper. Recycling of most automobiles begin at auto salvage dealers, who remove reusable or resalable parts, drain fluids, and flatten the remaining components. After being delivered to a scrap yard, the crushed vehicle is separated into three streams: iron and steel, nonferrous metal, and non-metallic scrap. The non-metallic scrap is typically sent to land fills and the remainder is shredded into smaller pieces of various materials before being shipped to respective end markets.
- **Car Batteries:** Automotive batteries (lead-acid batteries) are generally made up of a hard rubber or plastic case, lead and an electrolyte solution. Car batteries are the single most recycled product in the United States; According to the U.S. EPA, 99 percent of automobile batteries were recycled in 2006. Most individuals return their old car batteries to the dealership or the store where they are purchasing their replacement. Additionally,

each year the American Automobile Association sponsors the AAA Great Battery Round Up, during which they set up collection sites for dead car batteries and perform free automobile battery checks; this is usually held in correspondence with Earth Day. If the case of the battery is polypropylene, it is typically returned to a battery manufacturer to become new covers and cases. If the case is rubber it can be recycled with the lead smelting process as a carbon source. The recycled lead is used for new plates in batteries. Lead oxide can also be reused in the manufacturing process to create new battery units. The sodium sulfate solution can be reused in a variety of manufacturing processes, including glass, textiles, and laundry detergents. It can also be treated and reused in new battery manufacturing.

- **Auto Parts:** This category includes products such as the windshield, brake pads, oil filter, seat covers, and floor mats. Windshields/Auto glass may be recycled into asphalt filler, fiberglass, glass beads, reflective additive, architectural aggregate, ground for abrasives, backing to carpet, and a line of products (e.g. wine glass, counter tops, glass lamps). Oil Filters (steel) may be recycled into cans, household appliances, construction materials, flat-rolled steel sheets, concrete reinforcement, structural beams, new car parts, and new oil filters. Polyurethane products such as floor mats and truck bed liners can be used to produce new foam, padding products, or tire covers. Wheels and wheel covers can be resold as used parts or reformed into other metal parts. Car seats can be dismantled and fed into the standard metal, plastic, and foam recycling processes.

## RUBBER

### ENVIROForm Recycled Products, Inc.

P.O. Box 553

Geneva, NY

Ontario County

[www.enviroform.com](http://www.enviroform.com)

*Specifics:* Tire Crumb, manufactures parking lot signs, wheel chocks, speed pumps, dock bumpers, mats, flooring

*Business Type:* End-user/Manufacturer

*Amount of Material handled per month:* 80,000 - 100,000 tons

*Minimum amount required for Business:* Roll-off container or semi-trailer load. Uses crumb rubber to manufacture a variety of products.

---

### Parmenter, Inc.

1800 State Route 14N

Geneva, NY

Ontario County

[www.feherrubbish.com](http://www.feherrubbish.com)

*Specifics:* Tires (retreads, commercial tires only)

*Business Type:* ReManufacturer

*Minimum amount required for Business:* 1 tire

### HOUSEHOLD

- **Food:** One of the largest contributors to home-based composting piles is kitchen waste. Scraps from meal preparations as well as cooking supplies can be added to a compost bin and contribute nutrients to soil and mulch. Composting guides generally sort matter into two categories, according to what they contribute to the process: green (nitrogen) and brown (carbon).
- **Cooking Oil:** Cooking oil is defined as “purified fat of plant or animal origin.” It is mainly used when frying and sautéing, as well as in baked goods and salad dressings. Biodiesel is a biodegradable and nontoxic fuel that can be made from various forms of cooking oil.

- **Light Bulbs:** There are many types of bulbs.
  - *Tube-style Fluorescent Lamps.* Commonly used as overhead lighting in office buildings, these lamps also come in compact shapes for a variety of other uses for both the home and office.
  - *Compact Fluorescent Lamps (CFLs).* CFLs are smaller versions of the standard tube-style fluorescent lamps and can be used in place of standard incandescent lamps. CFLs are more energy efficient and last longer than incandescent lamps. These lamps contain levels of mercury that require proper disposal and special cleanup if broken.
  - *Mercury Vapor Lamps:* These are the original high-intensity discharge (HID) lamps with blue/white light. They were originally designed for farmyard lighting.
  - *Metal Halide Lamps:* These are newer, more efficient HID lights found in homes, businesses and institutions. They are also used for headlights and can be spotted by their bright, blue-tinted light.
  - *High-Pressure Sodium-Vapor Lamps:* These lamps generate white-yellow light used for street lamps and outdoor security lighting.
  - *Ultraviolet Lamps:* Typically used in water and air purifiers for germicidal purposes, these lamps are also used in some tanning salons.

With lamps such as compact fluorescent lamps (CFLs), mercury content needs to be taken into consideration before disposal. The United States Postal Service has a partnership with OSRAM SYLVANIA to allow consumers to shipped use compact fluorescent lightbulbs to be recycled. <http://earth911.com/news/2007/12/06/sylvania-continues-lamp-recycling-program-with-us-postal-service/>

Fluorescent lamps are well suited for recycling due to the substances from which they are made. Each part (mercury and calcium phosphate) can be reused to make new lamps or other products. The aluminum used to manufacture the end-caps for lamps are used to make new end-caps and other aluminum products.

- **Clothing and Textile:** Textiles can be recycled into sandbags, geotextiles, wiping rags, and new fabrics.
- **Mattresses:** Mattresses can be a challenge to recycle because of their size, but if they are broken down and separated, the materials can be reused. Metal springs can be melted down and sold to steel companies. The cotton and foam are bought by companies who use it for carpet bagging or insulation. The wood is commonly sold to wood chippers or burnt for fuel.

## ***ORGANICS AND PUTRESCIBLES***

### **Baker Commodities**

2268 Browncroft Blvd.

Rochester, NY

Monroe County

[www.bakercommodities.com](http://www.bakercommodities.com)

*Specifics:* Organics (bones and meat, grease/oil)

*Business Type:* Collector/Hauler; Processor; ReManufacturer

### **Foodlink**

936 Exchange Street

Rochester, NY

Monroe County

[www.foodlinkny.org](http://www.foodlinkny.org)

*Specifics:* Reusable/Salvageable (all food products, nonperishable food, surplus and hard to move inventory, inventory that can be eaten, but not sold)

*Business Type:* Reuse/Materials Exchanges

## ***CLOTHING AND TEXTILES***

**Rochester NY Freecycle**

[http://groups.yahoo.com/group/RochesterNY\\_Freecycle/](http://groups.yahoo.com/group/RochesterNY_Freecycle/)

**ABVI Goodwill Victor Donation Center**

2 Commerce Drive

Victor, NY 14564

Ontario County

<http://www.abvi-goodwill.org/>

**Rochester Community Wishbook**

<http://communitywishbook.com>

**Volunteers of America Western New York- Canandaigua Location**

39 Eastern Blvd.

Canandaigua, NY 14424

<http://www.voawny.org/>

**Rochester Environment**

<http://rochesterenvironment.com>

### **HOUSEHOLD HAZARDOUS WASTE**

Household hazardous waste (HHW) is waste that would normally be considered hazardous under DEC Part 371 regulations. Because it is generated in small quantities in homes, it is exempt from the hazardous waste regulations. HHW includes such products as oils, batteries (auto and consumer), solvents, cleansers, paints, fertilizers, and pesticides. It is not known how much HHW is generated in Ontario County each year, but waste generation studies generally attribute less than 1 percent of a county's waste stream to these materials.

HHW is disposed of in municipal trash. To date, the county has not sponsored a HHW collection program, recommending that residents use up the products for the purpose for which they are purchased. Gas station owners are required to accept up to 5 gallons of waste oil a day from residential customers for proper disposal. The NYS Legislature passes Chapter 304 of the Laws of 1991 that restricts the amount and types of heavy metals in batteries in New York. The bill also establishes a schedule for setting up a collection system for recycling and disposing of household batteries.

- **Household Cleaners:** When hazardous cleaning products are disposed of in landfills, the chemicals they contain can seep into groundwater. Cleaning chemicals that are disposed of down drains also end up in the water system and others drift from the air where they are initially used into the air outside. Due to the various types of cleaning products, there are several methods for properly disposing of them. Household cleaning products that are hazardous should be properly disposed of by household hazardous waste (HHW) facilities. The process that follows exemplifies the course of HHW, specifically cleaning products, through the disposal process:
  1. Trained staff members sort and categorize the materials by chemical class for proper storage. The HHW is typically classified as ignitable, corrosive, reactive or toxic. Cleaning products are categorized as corrosive or acidic alkaline.
  2. A contracted hazardous waste hauler collects the waste into drums, manifests the material, and transports it to different treatment facilities based on the type of the waste. Disposal locations are chosen based on the use of environmentally protective methods.

### **YARD WASTE**

- **Leaves:** Leaf recycling is accomplished through composting, which produces an end product suitable for use as fertilizer or mulch.
- **Grass Clippings:** Grass clippings can be recycled back into the lawn so that the lawn will get the full benefit from the nutrients in the clippings. Bagged clippings can be recycled by composting with MSW, sewage sludge, or other yard wastes.
- **Brush and Branches:** Brush and branches are recycled by chipping them into smaller particles for use as landscaping mulch or a bulking agent for MSW, sewage sludge, or yard waste composting.
- **Dirt:** Dirt is soil or earth waste resulting from excavation or demolition. Dirt waste is also produced by air filters in industrial plants and by household vacuum cleaners. Uncontaminated soil can be recycled as general or structural fill at a construction site or as

daily or intermediate landfill cover. Contaminated soil can either be recycled for use as fill after decontamination via incinerator or as landfill cover, eliminating the need for excavation of new soil for use as cover.

*LOCAL MARKETS FOR SPECIALIZED RECOVERED RECYCLABLES*

***YARD TRIMMINGS***

**Brighton (T)**

2300 Elmwood Avenue

Rochester, NY

Monroe County

*Specifics:* yard trimmings

*Business Type:* Part 360 Permitting Composting Facility

*Amount of Material handled per year:* 30,100 cu yd/yr

**Greece (T)**

647 Long Pond Road

Rochester, NY

Monroe County

*Specifics:* yard trimmings

*Business Type:* Part 360 Permitting Composting Facility

*Amount of Material handled per year:* 20,300 cu yd/yr

**Waste Management – High Acres**

425 Perinton Parkway

Fairport, NY

Monroe County

*Specifics:* yard trimmings

*Business Type:* Part 360 Permitting Composting Facility

*Amount of Material handled per year:* 93,000 cu yd/yr

### **ASBESTOS**

Asbestos is defined by Part 360 as “friable solid waste that contains more than 1 percent asbestos by weight and can be crumbled, pulverized, or reduced to powder, when dry, by hand pressures”. The material collected in a pollution control device designed to remove asbestos is also included.

Asbestos materials exist in residential, commercial, institutional, and industrial buildings. They can be found in surface materials, pipe insulation, wallboard, floor and ceiling tiles, and side shingles. Asbestos is considered a non-hazardous industrial waste whose disposal requires a Part 364 waste haulers permit for quantities above 500 pounds.

The disposal of asbestos is regulated by both the federal and state governments. The relevant federal regulations include the Occupational Safety and Health Administration – Title 29, Parts 1910 and 1926 and USEPA – 40 CFR Parts 762 and 61. New York State requirements include Parts 360 and 364 of Title 6, NYCRR and Rule 56 of the State Labor Code. The materials must be properly bagged according to 40 CFR Part 61, Subpart a and M, and 29 CFR Part 1910 and measures must be taken to prevent the asbestos fibers from becoming airborne.

Part 360 regulates the disposal of asbestos in landfills and acceptance at transfer stations. Contractors who remove asbestos from buildings are required to use a hauler with a Part 364 permit. Abatement projects must comply with NYS Rule 56 except for work done in an owner-occupied single family dwelling performed by the owner. These owners can place asbestos out with the trash provided it is double-bagged in plastic. DEC recommends that homeowners notify their waste hauler that asbestos will be in the trash.

### **SEWAGE SLUDGE**

Municipal Wastewater Treatment Plant Sludge is a semi-solid or liquid waste generated from a water or wastewater treatment plant. Ontario County has ten municipal sewage treatment plants (STPs). Four of the plants treat sludge prior to final disposal in the Ontario County Landfill; one plant (Gorham) treats sludge prior to final disposal in landfills through the Penn Yan STP. Two of the plants (Farmington and Honeoye Lake) are relatively small and send their liquid sludge to the Canandaigua STP for processing prior to disposal. The remaining three plants compost their sludge on-site (these facilities are known as Biosolids Beneficial Use Facilities).

## ***BIOSOLIDS***

### **Clifton Springs (V)**

1 West Main Street

Clifton Springs, NY

Ontario County

*Specifics:* biosolids

*Business Type:* Part 360 Permitting Composting Facility

*Amount of Material handled per year:* 40 dry tons/year

### **Manchester-Shortsville**

8 Clifton Street

Manchester, NY

Ontario County

*Specifics:* biosolids

*Business Type:* Part 360 Permitting Composting Facility

*Amount of Material handled per year:* 73 dry tons/year

### **Webster (V)**

28 West Main Street

Webster, NY

Monroe County

*Specifics:* biosolids

*Business Type:* Part 360 Permitting Composting Facility

*Amount of Material handled per year:* 112 dry tons/year

***BIOSOLIDS, CON'T***

**Mt. Morris**

117 Main Street

Mt. Morris, NY

Livingston County

*Specifics:* biosolids

*Business Type:* Part 360 Permitting Composting Facility

*Amount of Material handled per year:* 70 dry tons/year

**Ontario (T)**

1850 Ridge Road

Ontario, NY

Wayne County

*Specifics:* biosolids

*Business Type:* Part 360 Permitting Composting Facility

*Amount of Material handled per year:* 53 dry tons/year

**Sodus (V)**

14-16 Mill Street

Sodus, NY

Wayne County

*Specifics:* biosolids

*Business Type:* Part 360 Permitting Composting Facility

*Amount of Material handled per year:* 20 dry tons/year

*LOCAL MARKETS FOR SPECIALIZED RECOVERED RECYCLABLES*

***BIOSOLIDS, CON'T***

**Arcade (V)**

17 Church Street

Arcade, NY

Wyoming County

*Specifics:* biosolids

*Business Type:* Part 360 Permitting Composting Facility

*Amount of Material handled per year:* 65 dry tons/year

**Attica (V)**

Village Hall, 9 Water Street

Attica, NY

Wyoming County

*Specifics:* biosolids

*Business Type:* Part 360 Permitting Composting Facility

*Amount of Material handled per year:* 180 dry tons/year

**NON-HAZARDOUS INDUSTRIAL WASTE**

Non-Hazardous Industrial Waste (NHIW) includes process waste and industrial sludge generated by local industries. In Ontario County, this waste stream comes largely from the food and wine industry in the form of sludge from treatment plants treating food processing wastewater and vegetable/filter process waste. Metal and paper plant sludge also comprise a portion of this stream. Food and wine process waste occurs primarily in the late summer and fall months, with lower levels generated during the winter season.