



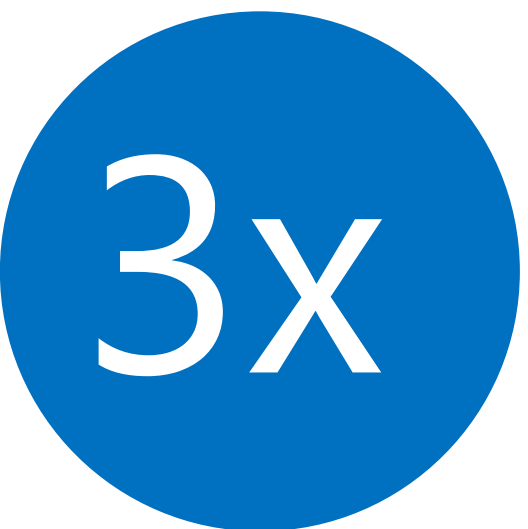
Study Period:
January 1, 2013 – November 30, 2019



17 Crashes
71% Right-angle collisions
Failure to stop
Failure to yield the right-of-way



4 Injury crashes
1 Fatal crashes



Crash rate is higher than
the statewide average

LOCAL NEWS

Off-duty Ontario County Sheriff's Deputy suffers serious injuries in Hopewell accident

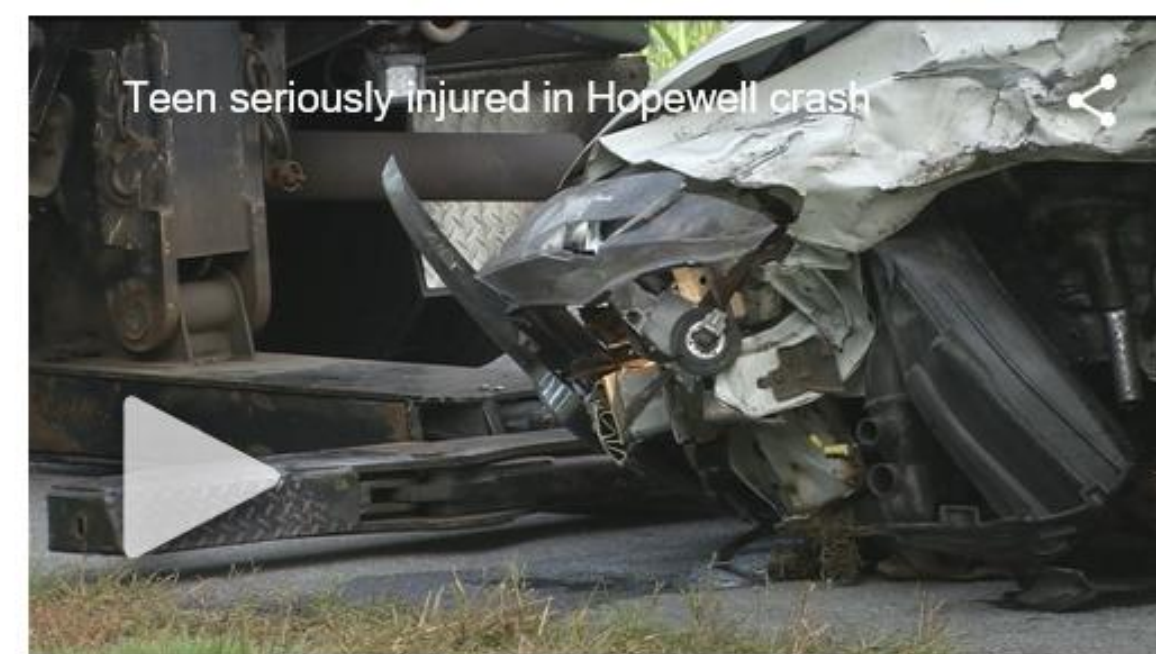


by Staff
Posted: May 12, 2017 / 05:36 PM EDT / Updated: Jun 2, 2017 / 05:18 PM EDT

An accident in the Town of Hopewell Friday afternoon resulted in one person being flown to the hospital.



Teen seriously injured in Hopewell crash at intersection where jail deputy was killed



September 13, 2017 06:43 PM

Emergency crews responded to a serious crash at the same intersection where an Ontario County Jail deputy lost his life.

